

AMERICAN-MADE DURABILITY IN DENTAL LAB EQUIPMENT

FAMILY OWNED & OPERATED SINCE 1920

- All 18 gauge welded steel construction with an oven-cured powder-coated painted finish
- Spacious 6" riser or chase to run air, gas and electric lines
- Totally enclosed, powerful and quiet 62-II Dust Collector pre-wired for ease of operation
- Double tier shelf to hold cases conveniently
- Dual fluorescent bulb overhead lighting mounted on stylish and strong support with the pre-wired light switch
- Six outlet pre-wired power strip
- Removable 16" x 12" stainless steel work surface protector
- Laboratory grade solid, smooth Resistop® work surface that resists stain and scratches
- Two suction inlet options
 - Bench top 3" suction inlet with blast gate
 - In drawer suction complete with protective acrylic shield and padded comfort arm rest
- Four drawers for storing tools and equipment
- Easy set-up and assembly
- Dimensions: 42"W x 30"D x 32" H work surface



RED WING
TECH Lite

Made in the U.S.A.
Since 1920

PTL-215SP

HANDLER
RED WING INTERNATIONAL

(800) 274 2635

612 North Ave East, Westfield, NJ 07090
Tel (908) 233-7796 Fax (908) 233-7340
WWW.HANDLERMFG.COM

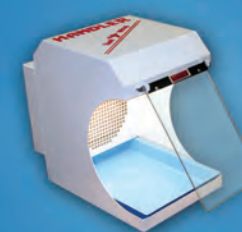
HANDLER
RED WING INTERNATIONAL



AMERICAN-MADE DURABILITY IN
DENTAL LAB EQUIPMENT

FAMILY OWNED & OPERATED SINCE 1920

Dental Equipment & Supply 2013 Catalog



(800) 274 2635

612 North Ave East, Westfield, NJ 07090
Tel (908) 233-7796 Fax (908) 233-7340
WWW.HANDLERMFG.COM

HANDLER

YESTERDAY, TODAY AND TOMORROW



It was the early 1900's and the German emigrant owner of a small dental lab in Kearney, New Jersey was making vulcanite dentures and partials. Edward Handler knew there must be a better way to make removable dental appliances. He designed and had cast new styles of denture flasks that were easier to take apart and remove models. He designed a newer style and less expensive flask press.

Both the "Donham Flask" and "Ideal Press" were a hit in the local dental lab market, so Ed decided to open a dental manufacturing facility at his location in Kearney. Ed added vulcanizers and different flasks to his growing manufacturing facility and continued to create and innovate newer and better denture processing equipment for the local dental market, including a new dental lathe – The Red Wing Lathe.

In the mid 1930's Ed Handler decided to move his facility to Kinney Street in Newark, NJ across from one of his larger customers, the Wm Dixon Company. Then in the late 1940's after WW II, he moved his facility to Garwood, NJ in a new 5,000 square foot facility. There Ed continued to build cast flasks for dentures, crown and bridge flasks, vulcanizers, Red Wing Lathe and a newer product – a polishing unit. Towards the end of the 1950's, Ed Handler met George DeCoursey, the Vice-President and General Manager of Aderer Gold and the Cosmos Company. In 1957, Ed sold the business to George DeCoursey and retired.

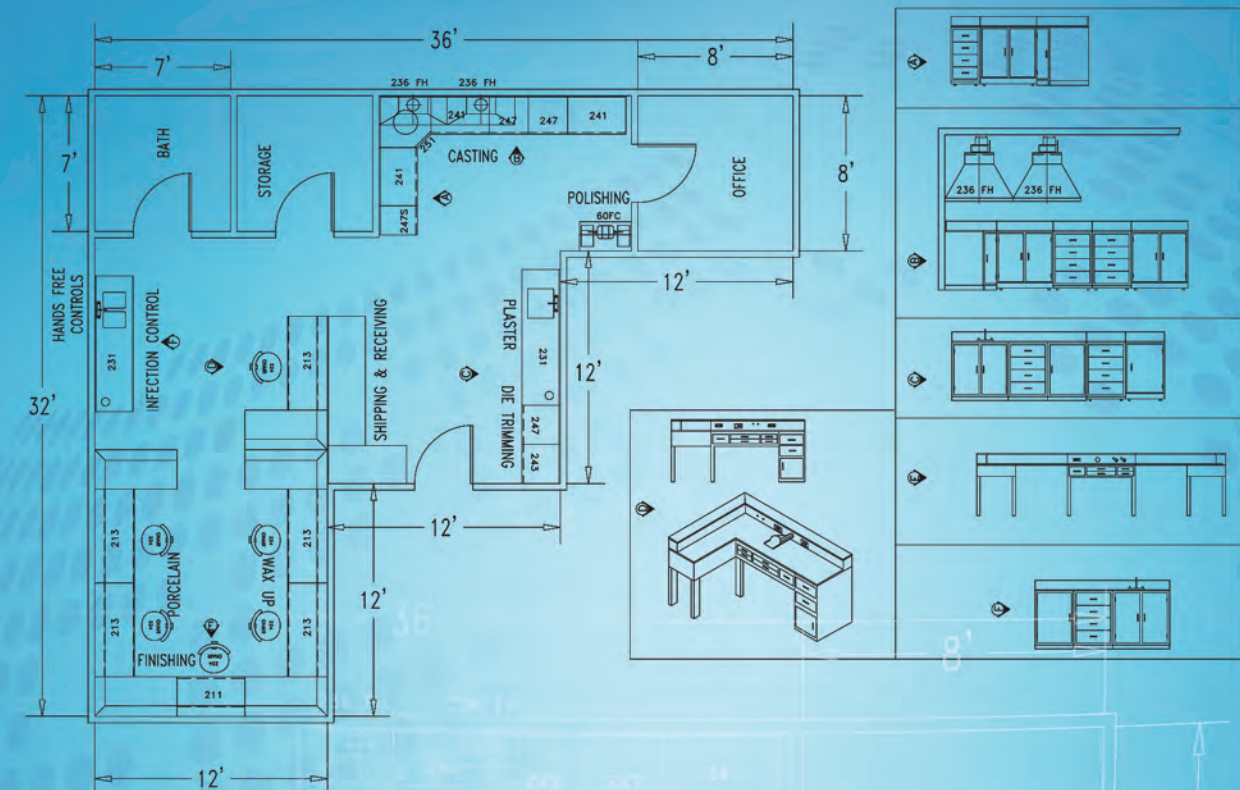
DeCoursey continued in the family tradition of building durable dental lab equipment. In 1963 George hired a young engineer, Bill Lehman, who was also George's son in law. Over the next year business tripled and Handler's business continued to grow, adding new products to their line of lathes, forged denture flasks, sturdy denture presses and compresses, plus polishing units, dust collectors and other products for various industries. In 1979 Bill Lehman purchased the company from George DeCoursey and continued creating and building new, quality products for the dental, jewelry and industrial trades. Continuing in the family tradition, Handler continued to grow and prosper.

Today, Handler Manufacturing Co., Inc. is known world wide for their quality products which are built at affordable prices. Unlike many "manufacturers" today, Handler continues to build and manufacture over 90% of their products in their factory in Westfield, NJ. With in house sheet metal and machine shop, Handler has the capability to custom build one product or larger quantities for customers. Handler products are sold exclusively through authorized dealers and distributors and Handler staff members work closely with the end user to provide a custom designed lab furniture layout or suction system for the individual laboratory.

In 2001, a new family member entered the Handler business. Rick LaDuca brought with him much experience and diverse business background from the corporate world including new ideas and computer technology. In 2004 Handler added a new ERP computer system, which has helped to improve quality, build better and more durable products, plus design new products for the dentist's lab and modern dental lab. Handler recently designed and bought out a new eight flask two stage electric curing system at a very competitive price. New Pro Tech Lite line of work station designs have been added to Handler's line of lab furniture, along with new and more efficient cartridge filter systems for our dust collectors. Handler is able to help the lab owner and dentist design a lab with an efficient work flow, while providing them with high performance products at affordable prices. Along with this, Handler products are manufactured and built in the United States, not in other countries.

Today, Handler continues to build their standard line of durable denture processing equipment e.g. flasks, press, compresses, which were Ed Handler's original product line, as well as Red Wing lathes and model trimmers, Dyna-Vac small and large dust collectors and chucks, in addition to designing newer and more efficient processing equipment for the trades served by Handler. By visiting Handler's web site at www.HandlerMfg.com, the customer may see the full line of products built by Handler in addition to the trades served.

As the dental industry continues to evolve, so will Handler. Handler has built a rich heritage of manufacturing products that customers need and servicing their customers with integrity, professionalism and courtesy. Handler is committed to maintaining this traditional value system, while continuing to focus on manufacturing good, solid American made quality products to meet the demands of the dental lab and other industries served. Innovation, creativity and customer care will always be a part of Handler's culture. **And, if you don't see it, maybe Handler can build it for you.**



Handler's benches and cabinetry can withstand the rigors of the lab environment and are manufactured of 18 gauge steel with long-lasting Resistop® work surface.

Handler's solutions are the most affordable solutions in the industry. The staff at Handler has the experience and know how for efficient lab work flow and can customize almost any solutions to meet requirements.

No project is too small or too big



Handler manufactures its products in the USA and offers turn around times that are very reasonable.

Handler offers a variety of colors and styles to meet your needs.

Handler provides the necessary accessories such as gas and air valves, boil out and curing units, casting areas, plaster work areas, polishing units, central or decentralized dust collection systems, hands free faucets and sinks, comfortable seating, shelves, lighting, plaster bins, wall mounted storage and more.

The staff at Handler understands labs and we care about our customers!

Product Guide

Lathes and Motors

Lathes.....	page 2
Lathes with Chuck Changers	page 3

Model Trimmers

Trimmers.....	page 4-5
Dry Trimmers.....	page 5
Model Trimmer Accessories	page 24

Dust Collection

Bench-Top.....	page 6
Under-Counter	page 7
Central System	page 8
Replacement Filters	page 22
Dust Collector Accessories	page 23

Denture Curing and Processing.....

High Volume Processing.....	page 9
Small & Compact Curing	page 10

Polishing Units

Bench-Top.....	page 11
Stand-Up Polishing Systems.....	page 12-13

Splash Hoods..... Page 14

Denture Flasks, Presses & Ejectors

Denture Flasks	page 15
Flask Compresses	page 15
Flask Presses	page 16
Flask Ejector	page 17

Chucks & Spindles

Chucks & Spindles.....	page 18
Automatic Chucks.....	page 19

Handpiece with Syncro/Torque Motor

Processing Equipment/Vibrators..... page 21

Bench Accessories.....page 25-26

LAB FURNITURE

Design & Lab Layout	pages 28-32
Lab Benches & Workstations	pages 33-36, 38
Lab Cabinets	pages 37-38
Shelves	page 39
Lab Bench Accessories	pages 25-26

Index Page 40



PTL-215SP

Life
Time
Lab
Furniture

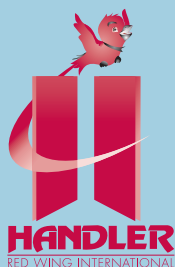
Turn to back of this catalog for a full line
of Lab Furniture or visit us on the web at:
handlermfg.com



DENTAL TRADE ALLIANCE



Fabricators & Manufacturers
Association, International®



United States of America
612 North Avenue East,
Westfield, NJ 07090-0520
Ph: 908-233-7796
Fx: 908-233-7340
www.handlermfg.com

Copyright © 2012-13 HANDLER MANUFACTURING, INC. All brand
names, trademarks and registered trademarks are the property of
their respective owners. Information contained within this document is
subject to change without notice. All rights reserved.
CATALOGUE 2012-2013



Lathes & Motors

Red Wing Polishing Motors have been manufactured by Handler for over 90 years. While providing a variety of horsepower ratings and speeds for the technician, Red Wing motors are made in the U.S.A., ETL listed, and known the world over for quality, dependability and affordability. Precision turned shafts made of alloy steel and double shielded ball bearings insure the smooth movement of shafts. Since 1920, Red Wing motors have provided the precision and torque required by the dental and industrial trades. We are certain you will find Handler Red Wing motors the most durable product for your lab or dental office.

#1 Selling Red Wing Lathe!



26A

26A RED WING LATHE

A full 1/4 HP, 1725/3450 RPM two-speed lathe for use on top of laboratory bench. Its 4 1/2" [11.4cm] shaft height allows for easy use by the technician with hands resting on the tabletop. Maintenance free standard dental, tapered shafts—each includes a right and left chuck remover for easy removal of standard dental chucks. Chucks and accessories ordered separately. The 26A is manufactured to provide years of durable service while being utilized for such operations as polishing and grinding. 115V/60Hz. Also available in 230V/50Hz, 230V/60Hz and 115V/50Hz at additional cost. Shipping Wgt.: 39 lbs [17.7 Kg]
Unit Dimensions: 15 1/2" L x 8" W x 7 3/4" H
[39cm x 20cm x 20cm]

Available in 1/3 HP See Model 28L



26

26 RED WING LATHE

A full 1/4 HP, 1725/3450 rpm two-speed polishing lathe with 6" [15.2cm] shaft height. Designed and built for use as a polishing lathe, its tapered shaft will accept standard dental tapered chucks. Includes a left and right chuck remover for easy removal of chucks.

The 6" [15.2cm] shaft height of the 26 will allow the technician to utilize larger diameter buffing wheels for pumice and dry polishing operations. The 26 is manufactured to provide years of durable service when used for polishing and grinding. 115V/60Hz. Also available in 230V/50Hz, 230V/60Hz and 115V/50Hz at additional cost. Shipping Wgt.: 41 lbs [18.6 Kg]
Unit Dimensions: 15 1/2" L x 8" W x 9 1/4" H
[39cm x 20cm x 23cm]

Available in 1/3 HP See Model 28H



27 RED WING LATHE

A full 1/4 HP single speed 3450 rpm polishing motor with a 6" [15.2cm] shaft height (115Volts/60Hz). Designed to be utilized by the technician who desires a single speed polishing motor where a 3450 rpm speed is used exclusively for polishing. Chucks accessories additional. 115V/60Hz. Also available in 230V/50Hz, 230V/60Hz and 115V/50Hz at additional cost. Shipping Wgt.: 41 lbs [18.6 Kg]
Unit Dimensions: 15 1/2" L x 8" W x 9 1/4" H
[39cm x 20cm x 23cm]

Order Lathes with
7L Spindle and 18 chuck



18 7L
See page 18 ➡



16B CHUK/CHANGER WITH LATHE

Model 16B is the Chuk/Changer factory-installed to the right side of a 26A Low Base, Red Wing Lathe. This combination provides the technician with the ultimate in chuck changing efficiency at both low and high lathe speeds. The movement of the activating handle allows the technician to change from 1/4" [6.4mm] to 3/32" [2.4mm] burs, mandrels and chuck accessories without stopping the lathe. This combination will pay for itself in time saved, while providing excellent concentricity for accurate, professional results in finishing appliances. All chuck and maintenance accessories included. 115V/60Hz. Also available in 230V/50Hz, 230V/60Hz and 115V/50Hz at additional cost.

Shipping Wgt.: 41 lbs [18.6 Kg]

Unit Dimensions: 18 1/4" L x 8" W x 7 3/4" H [45cm x 20cm x 19cm]

Available in 1/3 HP - Model 16SB



16B-1 CHUK CHANGER

Model 16B-1 is the 16 Chuk/Changer factory-installed on the right side of a Model 26 High Base Red Wing Lathe. The 16B-1 will allow the technician to utilize larger diameter buffs and abrasives, while obtaining the accuracy and speed of interchanging both 3/32" [2.4 mm] and 1/4" [6.4 mm] burs, mandrels and chuck accessories while the lathe is in motion. This combination will pay for itself in time saved, while providing excellent concentricity for accurate, professional results in finishing appliances. All chuck and maintenance accessories included. 115V/60Hz. Also available in 230V/50Hz, 230V/60Hz and 115V/50Hz at additional cost.

Shipping Wgt.: 45 lbs [20.4 Kg]

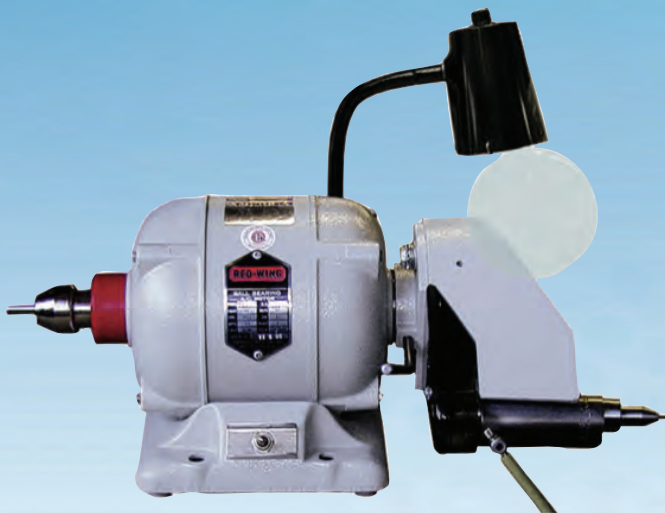
Unit Dimensions.: 18" W x 8" D x 9 1/4" H [45cm x 20.3cm x 23cm]

Available in 1/3 HP - Model 16SB-1



Order 16B and 16B-1
with the 7L Spindle

See page 18 ➡



16C ACCELA/ROTOR

The 16C Accela/Rotor is a combination of the Handler Accela/Rotor attachment 16D and No. 26A Red Wing Lathe. The Accela/Rotor attachment converts the right side of the lathe from standard lathe speeds of 1725/3450 rpm to 12,000 and 24,000 rpm for use in finishing non-precious alloys and chrome-cobalt alloys. The 16C is shipped complete with a Red Wing Lathe, Accela/Rotor with movable light and protective shield, high speed spindle, adjusting levers and necessary guards. The high speed spindle incorporates an activating handle which opens and closes the 3/32" [2.4mm] collets for ease of changing burs and mandrels while the motor is running. 115V/60Hz. Also available in 230V/50Hz, 230V/60Hz and 115V/50Hz at additional cost.

Shipping Wgt.: 50 lbs [22.7 Kg]

Unit Dimensions: 19" W x 9" H x 11" D [48.2cm x 22.9cm x 30cm]



**Available in Model 16C-1, Accela/Rotor
attachment installed on Model 26 High Base Lathe.**

See page 19 for details.



MODEL TRIMMERS

MODEL TRIMMERS - WET AND DRY

Handler Model Trimmers are known the world over for quality, durability and affordability. Built of water grade aluminum, bronze and stainless steel, Handler Model Trimmers are offered in two different wheel sizes - 10" and 12". All units are powered by industrially rated, ball bearing, capacitor start motors. This non-stalling feature, along with easy access to cleaning and quick wheel change, provide a superior trimmer for your laboratory. All model trimmers are made in the U.S.A., ETL Listed and come complete for easy installation and operation.



Available options include:

- Factory-installed water solenoid to automatically activate water flow.
- Factory-installed Ortho-Angulator® orthodontic table.
- High performance balanced, studded diamond wheel.

Model Trimmers come standard with 1/4" thick reversible AND reinforced Carbo-Dent wheel, 2 rubber suction cup feet to raise front for better water flow, better safety and more stability.

1/4" thick reversible and reinforced Carbo-Dent wheel.

2 rubber suction cup feet to raise front for better water drainage, safety and stability.

Upgraded to Stainless Steel Spray Tube

31 MODEL TRIMMER

"The Professional" A 10" [25cm] diameter model trimmer powered by a full 1/3 HP ball bearing, capacitor start motor. Features include a swing-open front housing for ease of cleaning and wheel changing, internal gutter to facilitate water runoff, full wheel radius water spray for efficient wheel cleaning, drain trough which completely surrounds the model tray to prevent water leakage, large 1" [2.5cm] diameter water exhaust, motor cover with removable top plastic utility tray. Unit shipped complete, ready to use with minor set-up. Finished with a durable, baked coating. 115V/60Hz. Also available in 230V/50Hz, 230V/60Hz and 115V/50Hz at additional cost. Shipping Wgt.: 48 lbs [21.8 Kg]

Unit Dimensions: 16" D x 13" W x 12 3/4" H [41cm x 33cm x 32cm]

31-SV	WITH SOLENOID VALVE
31-3214	WITH ORTHO-ANGULATOR
31-WKD	WITH DIAMOND WHEEL

31X MODEL TRIMMER

A "Professional" 10" [25cm] diameter model trimmer powered by a 1/4 HP ball bearing, capacitor start motor for those desiring lower pricing. Features include a swing-open front housing for ease of cleaning and wheel changing, internal gutter to facilitate water runoff, full wheel radius water spray for efficient wheel cleaning, drain trough which completely surrounds the model tray to prevent water leakage, large 1" [2.5cm] diameter water exhaust, motor cover with removable top plastic utility tray. Lower torque feature for those who perform fewer model trimming operations. Shipped complete, ready for use with minor set-up. Finished with a durable, baked coating. 115V/60Hz. Also available in 230V/50Hz, 230V/60Hz and 115V/50Hz at additional cost. Shipping Wgt.: 48 lbs [21.8 Kg]

Unit Dimensions: 16" D x 13" W x 12 3/4" H [41cm x 33cm x 32cm]

31X-SV	WITH SOLENOID VALVE
31X-3214	WITH ORTHO-ANGULATOR
31X-WKD	WITH DIAMOND WHEEL

32 MODEL TRIMMER

A 12" [30cm] diameter Trimmer designed for the laboratory technician who trims plaster and stone models on a daily basis. Powered by a FULL 1/2 HP ball bearing, capacitor start motor, the 32 features a larger frontal opening and additional grinding capacity to trim models faster and easier.

The swing-open front housing with full wheel radius water spray, internal gutter for water diversion, surrounding drip trough, and motor cover with utility tray, makes this trimmer an excellent addition to the working laboratory. Shipped complete, ready to use with minor set-up; finished with a durable, baked coating. 115V/60Hz. Also available in 230V/50Hz, 230V/60Hz and 115V/50Hz at additional cost.

Shipping Wgt.: 55 lbs [22.7 Kg]

Unit Dimensions: 16" D x 15" W x 14 1/2" H [41cm x 38cm x 37cm]

32-SV	WITH SOLENOID VALVE
32-3214	WITH ORTHO-ANGULATOR
32-WKD	WITH DIAMOND WHEEL

32X MODEL TRIMMER

A 12" [30cm] diameter Model Trimmer powered by a 1/3 HP ball bearing, capacitor start motor for those desiring lower pricing and lower torque. The swing-open front housing with full wheel radius water spray, internal gutter for water diversion, surrounding drip trough, and motor cover with utility tray, make this trimmer an excellent addition to the working laboratory. Shipped complete, ready to use with minor set-up; finished with a durable, baked coating. 115V/60Hz. Also available in 230V/50Hz, 230V/60Hz and 115V/50Hz at additional cost.

Shipping Wgt.: 55 lbs [22.7 Kg]

Unit Dimensions: 16" D x 15" W x 14 1/2" H [41cm x 38cm x 37cm]

32X-SV	WITH SOLENOID VALVE
32X-3214	WITH ORTHO-ANGULATOR
32X-WKD	WITH DIAMOND WHEEL

32-3/4 MODEL HI-TORQUE MODEL TRIMMER

A Hi-Torque 12" diameter Model Trimmer powered by a 3/4 HP, capacitor start, 1725 rpm, ball bearing motor. Designed for and built for the very busy laboratory that trims a large quantity of models each day or the technician who wants maximum torque. A full wheel internal water spray washes the entire wheel as it rotates inside the aluminum housing, keeping the trimming wheel clean during operation. This rugged, Hi-torque trimmer is built to provide years of trouble free service. 115V/60Hz. Also available in 230V/50Hz, 230V/60Hz and 115V/50Hz at additional cost.

Shipping weight: 62 lbs. (27.2 Kg)

Unit Dimensions: 16" D x 15" W x 14-1/2" H [41cm x 38cm x 37cm]

32-3/4 SV	WITH SOLENOID VALVE
32-3/4-3214	WITH ORTHO-ANGULATOR
32-3/4 KD	WITH DIAMOND WHEEL

ORTHO ANGULATOR MODEL TRIMMERS



An Orthodontic Angulator Attachment for precise grinding of angles onto plaster or stone models. Easily set to desired angle up to 120 degrees from mid-line in 5 degree increments. Produces precise angled models for sturdy presentation. For Handler 10" [25cm] or 12" [30cm] Model Trimmer. **Orthodontic Angulator must be factory installed by Handler.**

Shipping Wgt.: 1 lb [0.5 Kg]

Unit Dimensions: 5 1/4" x 5 1/4" [13cm x 13cm]

Handler 31 model trimmer with 10" abrasive disc, 5 gallon cyclone with cartridge filter to trap dust particles for easy disposal. A 62-II super sucker draws a powerful 110 cfm through the cyclone and entraps particles 0.5 microns and larger. Hoses connect the 3 components, dust is removed from the work area and falls into a 5 gallon cyclone cannister. 115V/60Hz. Also available in 230V/50Hz, 230V/60Hz and 115V/50Hz at additional cost. Shipping Weight: 95 lbs. (3 boxes per system)

DRY MODEL TRIMMERS



31DTS

DRY MODEL TRIMMERS



DUST COLLECTION

DYNA-VAC Systems

For over 90 years, Handler has built durable, functional and affordable dust collectors. Our experience with dust collectors is second to none in the dental trade. We are certain you will find a Handler dust collector to fit your requirements. Should you require assistance in designing a suction system for your laboratory contact Handler. Our design staff will provide you with layout assistance. For those cases when a central system is not indicated, we offer a variety of units for the benchtop and underbench positioning. Some different types of dust require certain types of filters. Please contact us to discuss the filtering capability of the different filtering media Handler uses.

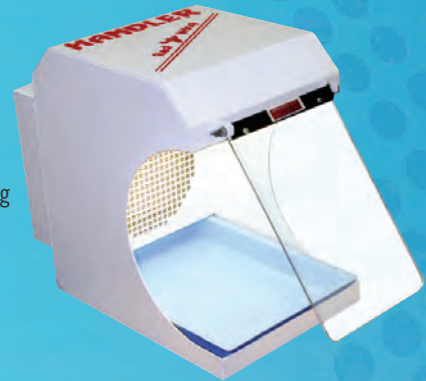
"#1 Selling Dust Collector"

550 PORTA-VAC BENCH TOP DUST COLLECTOR

A favorite of dental offices since its introduction several years ago, the 550 Porta-Vac is perfect for bench top light grinding and polishing with a hand piece or lathe. Featured enhancements include 40% more suction power, compact in line suction design, removable resin clean out tray, replaceable clear acrylic shield and reusable and replaceable pleated rear filter. The compact and lightweight 550 comes with a fluorescent light for hours of cool, bright operation and will collect 0.5 microns of dust and larger particles. Easy operation; take it out of the box, install the light, plug it in, and it is ready for use. The durable white powder coated heavy gauge steel frame is built to last, and the unit is made in the USA by Handler.

Shipping Weight: 18 lbs Unit Dimensions: 8 1/2" W x 12" H x 14" D [21cmx30cmx36cm]

Available in 220V/50Hz – Order Model 550-E



52CSU ETCHER CATCHER

Handler's Etcher Catcher is designed to collect dusts from aluminum oxide sandblasting; it is also excellent for handpiece grinding. Built with a larger cabinet and hinged Viewport, the 52CSU provides greater suction capacity to collect dusts in its cleanable, reusable cartridge filter. The bottom screen allows larger debris to collect on the bottom of the cabinet out of the air stream. Fluorescent light provides excellent visibility; rubber gaskets surrounding the two hand holes help keep dust contained in the cabinet. 115V/60HZ.

Shipping Wgt.: 17 lbs (7.3Kg)

Unit Dimensions: 11" W x 16" D x 9" H (28cmx41cmx23cm).

Available at 220V/50HZ – Model 52CSU-E. Available as a dust collection cabinet with filter and 3" flange to attach suction – Model 52CFI



PERFECT FOR ETCHING USING ALUMINUM OXIDE

52PAB

Handler's Paasche-style etching pencil is easy to set up and ideal for use with Handler's 52CSU Etcher Catcher. The 52PAB etching pencil comes complete with air tubing and a 6 oz. canister of aluminum oxide.

Shipping Weight: 3 lbs [1.4Kg]

Dimensions: 5 1/2" L x 3 1/2" x 1 1/4" H [14cmx9cmx3cm]

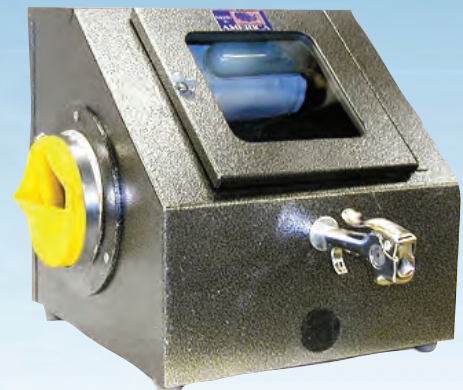
51 SANDBLASTER

A table-top sandblaster for use with Sand, Glass Beads or Walnut Shells, the 51 is designed to clean or treat the surfaces of precious castings e.g. copings, pontics, inlays, etc. Its compact size, with hinged, frontal access door, rubber side glove, large 5" [13cm] square window, lever air control valve and 3" [7.6cm] diameter exhaust port, allows for placement in a small lab area. Shipped complete with 3' x 1/2" [8cm x 1cm] air line hose, interior light, 5 lbs [2.3 Kg] of medium sand abrasive, and filter bag, the 51 is an excellent addition to any laboratory. Constructed of heavy gauge sheet steel and finished in a durable, baked coating.

Shipping Wgt.: 22 lbs [7.7 Kg]

Unit Dimensions: 10" W x 10" D x 14" H [25cmx25cmx36cm]

Walnut Shell Blaster - Order Model 51W



62-II SUPER SUCKER II

Designed to provide excellent suction to a single bench top work position, the 62-II Super Sucker develops 110 CFM (cubic feet / minute) at a static pressure of 63" of H₂O and is one of the most powerful single station dust collectors available. Designed for continuous duty, the double walled disposable filter bag is easily removed through the front access door with the removal of two thumb screws. A rear internal activated charcoal filter aids in the removal of acrylic monomer odors.

The 62-II Super Sucker is shipped complete with the dust collector with variable speed controlled suction motor, 6 feet of 2-1/2" flex hose and a fishmouth. This unit is not recommended for collection of ALO dusts. 115V/60Hz. Also available in 230V/50Hz, 230V/60Hz and 115V/50Hz at additional cost.

Shipping Wgt: 35 lbs [16 Kg]

Unit Dimensions: 10" W x 15-1/2" D x 13" H [25cm x 39cm x 35.5cm]

Available as a dust collector and hose only - Model 62-II-0

Available as a dust collector with splash hood - Model 62-II-SH



62 SUPER SUCKER

Designed to provide maximum suction capacity, the No.62 Super Sucker develops 225 CFM suction capacity through two top inlets. Dust and grindings are entrapped in a removable, disposable paper filter. A secondary polyester filter entraps finer dusts. A third filter made of activated charcoal removes up to 75% of acrylic monomer odors. Shipped complete with two fishmouths, two four foot sections of 3" (7.6cm) flexihose and four clamps, this unit is an excellent addition to the smaller laboratory. **The 62 Super Sucker is not for use with aluminum oxide and is designed for intermittent use. For continuous use, or use with aluminum oxide, see Model 60UFC.**

115V/60Hz. Also available in 230V/50Hz, 230V/60Hz and 115V/50Hz at additional cost.

Shipping Wgt.: 36 lbs [16.3 Kg]

Unit Dimensions: 14 3/4" W x 8 1/2" D x 17 3/8 " H [37cm x 22cm x 44cm]

Available as a dust collector with hose only - Model 62-0



60UFC DUST COLLECTOR

Introducing the NEW 60UFC DUAL WORK STATION DUST COLLECTOR With Drum Cartridge Filters. HANDLER unites state of the art drum cartridge filter technology with traditional power and functionality to yield the most cost effective dust extraction system on the market.

Special LOW introductory price, Same Handler quality, Strong Handler performance, Improved filter technology, 33% more filter area, Easy to clean - easy to replace, Collects 0.5 Micron and larger dust particles, Helps keep the work environment clean and healthy, powerful 1/2 HP brushless suction system yields 400 CFM. Comes with two hoses and two fishmouth suction inlets. 115V/60Hz. Also available in 230V/50Hz, 230V/60Hz and 115V/50Hz at additional cost.

Shipping Wgt.: 80 lbs [36.3 Kg] (Ships in two cartons)

Unit Dimensions: 15 1/8" W x 14 7/8" D x 22" H [38cm x 37.8cm x 55.9cm]

Available as a dust collector with a set of 14 shakeable cotton cloth filter bags - Model 60U-D.



Built-in Silencer on Dust Collectors



77

101

103 & 105

Handler makes larger central dust collection systems for 3+ work stations. We can assist you with ducting layout and configuration. **Call for details**

77 DYNA VAC

A 3/4HP suction unit designed to provide suction for up to 3 work positions, simultaneously. Powered by a ball bearing, capacitor start, industrially rated brushless motor, the model 77 provides cost effective dust extraction with a state of the art drum cartridge filter technology which collect particles as small as ½ microns.

The 77 dust collector generates 600CFM (cubic feet per minute) through the inlets provided. The unit is finished in a baked, durable coating, runs on 115V/60HZ and ships complete with switch and box type silencer.

Shipping weight: 240 lbs. [108.9 kg]

Unit dimensions: 24" W x 20" D x 38 ½" H [61cm x 51cm x 98cm]

Available with 24 cloth filter bags.

SUCTION INLETS	Four 3" (7.6cm) flanges – two mounted on each side of unit
C.F.M.	600 C.F.M.
FILTRATION	Two drum cartridge filters provide superior filtration for all lab applications
REPLACEMENT FILTERS	Order 60FC filters, quantity 2

101 DUST COLLECTOR

A 1 HP suction unit designed to provide suction for up to 4 work positions, simultaneously. Powered by a 1 HP ball bearing, capacitor start, industrially rated brushless motor, the model 101 provides cost effective dust extraction with a state of the art drum cartridge filter technology which collect particles as small as ½ microns.

The 101 dust collector generates 800CFM (cubic feet per minute) through the inlets provided. The unit is finished in a baked, durable coating, runs on 115V/60HZ and ships complete with switch and box type silencer.

Shipping weight: 270 lbs. [108.9 kg]

Unit dimensions: 26" W x 24" D x 41" H [66cm x 61cm x 104cm]

Available with 24 cloth filter bags.

Available in the following alternative configurations:

220V/60HZ, single phase – Order model 101-2201

220V/60HZ three phase – Order model 101-2203

SUCTION INLETS	Four 3" (7.6cm) flanges – two mounted on each side of unit
C.F.M.	800 C.F.M.
FILTRATION	Two drum cartridge filters provide superior filtration for all lab applications
REPLACEMENT FILTERS	Order 101 FC filters, quantity 2

103 DUST COLLECTOR

A 3 HP suction unit designed to provide suction for up to 8 work positions, simultaneously. Powered by a 3 HP ball bearing, capacitor start (single phase only) industrially rated brushless motor, the model 103 provides cost effective dust extraction with a state of the art drum cartridge filter technology which collect particles as small as ½ microns.

The 103 dust collector has a suction capacity of 1250 CFM (cubic feet per minute) through the inlets provided. The unit is finished in a baked, durable coating, runs on 115V/60HZ and ships complete with a fusetron switch box and a box type silencer.

Shipping weight: 410 lbs. [108.9 kg]

Unit dimensions: 30" W x 24 1/16" D x 58" H [76cm x 61cm x 147cm]

PLEASE PROVIDE A SKETCH SHOWING ROOM DIMENSIONS AND WORKSTATIONS FOR FREE LAYOUT OF CENTRAL SUCTION SYSTEM.

Available in the following alternative configurations:

220V/60HZ, single phase – Order model 103-2201

220V/60HZ three phase – Order model 103-2203

SUCTION INLETS	Four 3" (7.6cm) flanges – two mounted on each side of unit; different sized suction inlet(s) up to 6" diameter can be supplied
C.F.M.	1250 C.F.M.
FILTRATION	Two drum cartridge filters provide superior filtration for all lab applications
REPLACEMENT FILTERS	Order 103FC filters, quantity 2

105 DUST COLLECTOR

A 5 HP suction unit designed to provide suction for up to 8 work positions, simultaneously. Powered by a ball bearing, industrial 5HP, 220V/60HZ three phase motor, the model 105 provides cost effective dust extraction with a state of the art drum cartridge filter technology which collect particles as small as ½ microns.

The 105 dust collector has a suction capacity of 1800 CFM (cubic feet per minute) through the inlets provided. The unit is finished in a baked, durable coating, and ships complete with switch and box type silencer.

PLEASE PROVIDE A SKETCH SHOWING ROOM DIMENSIONS AND WORKSTATIONS FOR FREE LAYOUT OF CENTRAL SUCTION SYSTEM.

Shipping weight: 450 lbs. [108.9 kg]

Unit dimensions: 30" W x 24 1/16" D x 58" H [76cm x 61cm x 147cm]

SUCTION INLETS	Various diameter inlets up to 7" can be supplied to match user requirements
C.F.M.	1800 C.F.M.
FILTRATION	Two drum cartridge filters provide superior filtration for all lab applications
REPLACEMENT FILTERS	Order 105FC filters, quantity 2



DENTURE Curing & Processing

Handler manufactures two basic boilout/curing and boilout/curing/washout units. Single curing, boilout or washout units are built on a custom-made basis. All units are built to fit into existing steel cabinets or Handler's louvered cabinets and should not be installed without a steel cabinet. Each may be fabricated to be compatible with manufactured gas, natural gas, or electric.



26105SSWC BOILOUT/CURING UNIT

Handler introduces a New Boilout/Washout/Curing Unit complete with powder coated cabinet. Built & designed by Handler THE NEW 26105SSWC will provide your prosthetics laboratory with years of service at almost 40% savings over competitive units. Vented cabinet with internal shield, Available with economical gas or electrical powered, Heavy duty recirculating pump, Four faucet washout-tank-turn on walk away de-wax dentures, partials and flasks. Additional faucet (P26105-30F) available to fill tanks. Curing unit holds 8 two flask compresses-16 flasks, Heavy gauge stainless steel for durability & functionality, Sinks built into stainless steel top with seamless design, Marine Edging keeps water from running off work surface, built by Handler in the U.S.A.

Shipping Wgt.: 350 lbs [158.8 Kg]

Unit Dimensions: 35" wide x 24" deep x 36 3/4" high [89 cm x 61cm x 93 cm]

Electric - 26105SSWCCEL - Specify 208V, 220V or 240V.

Gas - 26105WCG - Specify natural gas or manufactured gas.

FOR SPECIAL ORDER CURING, BOIL-OUT/WASHOUT UNITS BUILT TO YOUR SPECIFICATIONS, CALL HANDLER OR YOUR DISTRIBUTOR FOR DETAILS.

26101 - SINGLE CURING TANK

26103 - 3 CURING TANK CURING SYSTEM

26104 - SINGLE WASHOUT UNIT

26102SSWC CURING UNIT

The 26102SSWC is the ultimate curing device for processing multiple dentures properly and efficiently. This unit is manufactured of heavy gauge stainless steel with seamlessly integrated curing tanks, backsplash and marine edge to stop water from running off. The vented cabinet is heavy gauge steel with an oven cured powder coated finish. Each tank is insulated to retain heat and can hold up to 16 flasks for maximum productivity in the denture lab. The 26102SSWCCEL model is electrically powered and has two 2Kw copper heating elements electrically controlled. Each heating element has a built in safety shut off. Please specify 208V, 220V or 240V when ordering. The unit can also be purchased for use with natural or propane gas, model 26102SSWCG. Each burner produces 7,500 BTU's. Also included with each unit is a lid for each tank and stainless steel flask trays.

Shipping Wgt.: 350 lbs [158.8 Kg]

Unit Dimensions: 35" W x 24" D x 36 3/4" H [89 cm x 61cm x 93 cm]





2010DCU TWO STAGE DIGITAL CURING UNIT

The 2010DCU Denture Curing Unit is a sophisticated curing unit featuring:

- 2-Stage curing unit with a digital control panel on which sequences of polymerizing times and temperatures can be programmed as required by user.
- The time of each step can be set between 0 and 999 minutes. The end temperatures at each plateau can be regulated by the user between 32°F and 210°F (0°C and 99°C).
- To enable the user to see the actual program status at all times, the curing unit has a synoptic display.
- Programming. It is extremely easy to program a heating sequence for the water in the tank.
- Low maintenance and easy cleaning.

The 2010DCU Denture Curing Unit has a circuit breaker (fuse in power inlet) that protects the machine against electric overloads.

Unit Dimension: 13.8" H x 16.5" W x 14.9" D (350mm x 420mm x 380mm)

Tank Dimension: 11" H x 10" W x 10" D (280mm x 255mm x 255mm)

Weight: 45 lbs [17kg]

Power Supply: 115V, 50/60Hz, 13A Consumption: 1500 W

Available in 230V/50/60Hz, 6 Amp – Model 2010DCU-E



448PP - 8 QT PNEUMATIC CURING VESSEL/PRESSURE POT

An 8 Quart Pneumatic Curing Vessel-Pressure Pot

Made of sturdy cast aluminum The new 448PP pressure vessel is built to provide 20 psi pressure* - while the acrylic resin is curing – forming a dense crosslinked repair for the dentist and patient.

The 448PP will not only allow for proper denture repair and relines, but will also double as a substitute curing pot-accommodating a 2-case bronze compress with the cover removed. The 448PP is shipped complete with pressure gauge, safety valve, air valve to introduce air into the pot, plus an air hose ready to connect to your compressor air source.

Shipping Wgt: 12 lbs [5.4 Kg]

Unit Dimension: 19" L x 8" H / Outside Diameter: 11" / Inner Diameter: 9 3/4" / Depth: 6"

* maximum internal pressure with safety valve = 22 psi



POLISHING UNITS

Our experience with polishing units is second to none in the dental trade. Whether you need a benchtop unit for low volume or a stand-up unit for high volume grinding and polishing, we are certain you will find a Handler polishing unit to fit your requirements.

575 MULTI-FUNCTIONAL BENCH TOP POLISHING SYSTEM

Complete bench top polishing system comes with a heavy gauge, stainless steel, powder coated cabinet, two suction motors & cartridge filters, two fluorescent lights, two dust collection trays, two insert pans and a 26A Red Wing Polishing lathe. Each suction motor delivers a powerful 225CFM, collects 0.5 microns of dust, easy access to reusable, replaceable pleated rear cartridge filter. Replaceable, adjustable clear acrylic shield protects user from debris, and can be set at different heights to accommodate user sitting down or standing up. Baked on durable powder coating, arm rests for comfortable, sustainable operation.

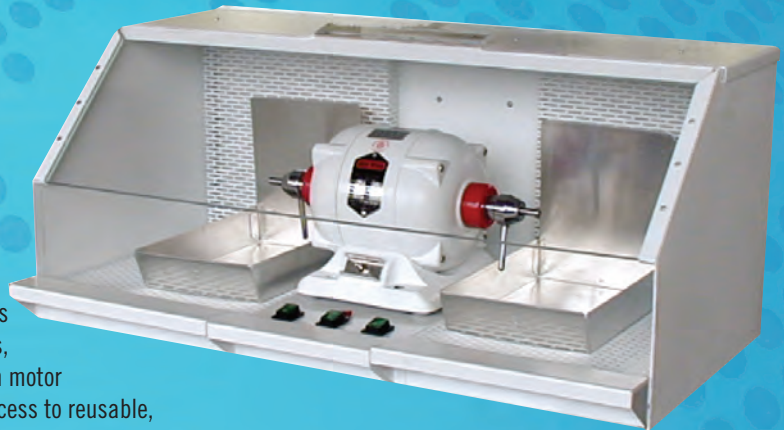
Designed & Built by HANDLER in the U.S.A. Affordably priced significantly lower than other competitive units. Easy operation for dry grinding, or polishing with pumice using the pumice pans. Powerful suction system protects user with safer, healthier environment. (Helps to meet OSHA standards). 115V/60Hz. Also available in 230V/50Hz and 230V/60Hz at additional cost.

Shipping Wgt: 115 lbs (Shipped in two cartons)

Unit Dimensions: 30 1/2" W x 16" H x 21" D

Also without lathe - order Model 575-0

Shipping Wgt: 75 lbs.



575-0 SAME AS THE 575 WITHOUT A 26A RED WING POLISHING LATHE



76D-3 BENCH TOP COMPLETE

A bench top polishing unit designed to provide 365CFM (cubic feet per minute) suction through two suction inlets while being utilized with a model 26A Red Wing Lathe for light polishing and grinding. The interior polishing area includes two light sockets to provide proper light, and two shields are affixed to the front of the cabinet to protect the technician.

The 76D-3 is constructed of heavy gauge sheet steel and finished in a durable, baked coating. Two reversible and replaceable filters entrap dusts as small as 5-10 microns and larger. Two aluminum pumice pans are provided to hold wet pumice and dry grindings. This unit is not recommended for use with gypsum or ALO. 115V/60Hz. Also available in 230V/50Hz and 230V/60Hz at additional cost.

Shipping wgt.: 105 lbs [48 Kg] – (Ships in two cartons)

Unit dimensions: 29" W x 20 1/2" D x 13" H

Available without Red Wing Lathe – Order Model 76D-0

Shipping wgt.: 66 lbs [30kg]

60FC-TS

POLISHING UNIT OFFERS THE LATEST DUST COLLECTION TECHNOLOGY APPLIED TO EXISTING, DEPENDABLE HANDLER DESIGN.

The 60FC-TS, the NEW standard of the laboratory industry, is designed with two drum cartridge filters for maximum performance to help keep your air clean and remove dusts from the environment. The filters are mounted onto a platform that can be easily removed for cleaning operations. The powerful 1/3 HP suction motor will process 500 CFM (cubic feet of air per minute). Two mounted aluminum polishing hoods (7" W x 10 1/2" D x 14" H) contain dusts, polishing compounds and debris.

The 60FC-TS is sold complete with a two speed 26 Red Wing high base lathe. The 60FC-TS can be used with most dust collection applications in the lab, including plaster, stone, pumice and tripoli rouge. 115V/60Hz. Also available in 230V/50Hz and 230V/60Hz at additional cost.

Shipping Weight: 300 lbs. [136 Kg]

Unit Dimensions: 56" H x 18" D x 32"W — 38" to bench top
[142cm x 46cm x 81cm — 97cm]

Available without Red Wing Polishing Motor - Model 60FC-D

Available with 2 fiberglass filters in lieu of drum cartridge filters — Model 60C-TS

State-of-the-art
cartridge filters



60FC-RETRO

Your existing 60C can be retrofitted with new drum cartridge filters.

Call and ask how.



60FC-1-TS

The 60C-1-TS is designed for users who desire a larger work area for polishing and grinding operations. The larger polishing hoods (11" high x 18" deep x 14" wide) allow technicians to polish from a seated or standing position. Its two drum cartridge filters provide almost twice the filter area of traditional fiber glass filters. The filters can be easily removed for cleaning, to help keep air clean and remove dusts from the environment.

The 60FC-1-TS has a powerful 1/3 HP suction motor which provides suction capacity of 500 CFM (cubic feet per minute). The unit is sold complete with the two speed model 26 Red Wing high base lathe. 115V/60Hz. Also available in 230V/50Hz and 230V/60Hz at additional cost.

Shipping wgt: 360 lbs (163 Kg)

Unit Dimensions: 56" H x 24" D x 42" W — 38" high to bench top
[142cm x 61cm x 107cm]

Available with 2 fiberglass filters in lieu of drum cartridge filters —
Model 60C-1-TS

75D-FC POLISHING GRINDING UNIT

Handler has re-designed its most popular polishing and grinding unit to include drum cartridge filter technology. The 75D-FC is a professionally designed grinding and polishing unit built specifically for dry grinding operations such as grooving plaster models, dry polishing and dry model trimming. The 75D-FC is powered by a $\frac{3}{4}$ HP suction motor which produces 600 CFM (cubic feet per minute) suction capacity.

The two drum cartridge filters can entrap material as small as .5 microns, helping to keep your air clean and remove dusts from the environment. The filters can be easily removed for cleaning and re-installed. Two mounted aluminum polishing hoods (7" W x 10 $\frac{1}{2}$ " D x 14" H) contain dusts, polishing compound and debris. The unit is sold complete with the two speed model 26 Red Wing high base lathe.

Available in 230V/50Hz and 230V/60Hz at additional cost.

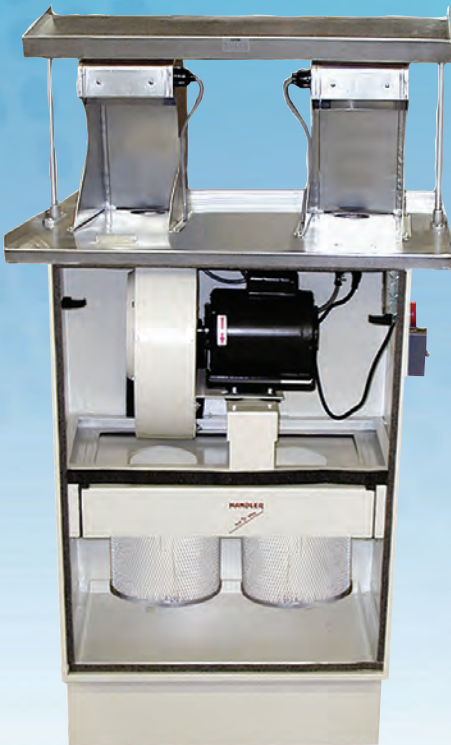
Shipping Wgt.: 350 pounds

Unit dimensions: 56" H x 32" W x 24" D – 40" to work surface
[42cm x 81cm x 61cm]

Available without model 26 lathe – Model 75D-FC-0

Available with 24 cloth filter bags and model 26 lathe – Model 75D

Available with 24 cloth filter bags without model 26 lathe – Model 75D-0



75D-0

75/77FC-RETRO

Your existing 75D and 77 can be retrofitted with new drum cartridge filters. Call and ask how.



SPLASH HOODS

Our resin splash hoods are fast becoming our most popular, durable, easy to clean, with no rusting or pitting product. Our aluminum splash hoods are available in three different sizes. Handler splash hoods are available with or without a light; we strongly recommend the purchase of a splash hood with a shield for safety purposes and OSHA compliance.



Aluminum Hood with Flange and Blastgate

Aluminum Hood

Aluminum Splash Hoods (6" wide)

86D - Aluminum Splash Hood with light, shield and insert pan
Light on left: 86D-L or Light on right: 86D-R
 Shipping Wgt.: 4 lbs [1.8Kg] Dimensions: 12" H x 6" W x 10" D

Additional options:

86D-LA OR 86D-RA
 3" Diameter Flange for connection to dust collector
86D-LB OR 86D-RB
 3" diameter flange plus blastgate (suction cutoff)

83NL-S - Aluminum Splash Hood with Shield and insert pan
 Shipping Wgt. 4 lbs [1.8Kg] Dimensions: 12" H x 6" W x 10" D

Additional options:

83NL-SA
 3" Diameter Flange for connection to dust collector
83NL-SB
 3" diameter flange plus blastgate (suction cutoff)

Aluminum Splash Hoods (8" wide)

84WL - Aluminum Splash Hood with light, shield and insert pan
Light on left: 84WL-LS or Light on right: 84WL-RS
 Shipping Wgt.: 4 lbs [1.8Kg] Dimensions: 12" H x 8" W x 12" D
 Add "A" for 3" diameter flange, "B" for flange and blastgate

84NL-S - Aluminum Splash Hood with Shield and insert pan
 Shipping Wgt.: 4 lbs [1.8Kg] Dimensions: 12" H x 8" W x 12" D
 Add "A" for 3" diameter flange, "B" for flange and blastgate.

Aluminum Splash Hoods (10" wide)

85WL - Aluminum Splash Hood with light, shield and insert pan
Light on left: 85WL-LS or Light on right: 85WL-RS
 Shipping Wgt.: 5 lbs [2.3 Kg] Dimensions: 12" H x 10" W x 14" D
 Add "A" for 3" diameter flange, "B" for flange and blastgate

85NL-S - Aluminum Splash Hood with Shield and insert pan
 Shipping Wgt.: 5 lbs [2.3 Kg]
 Dimensions: 12" H x 10" W x 14" D
 Add "A" for 3" diameter flange, "B" for flange and blastgate



Resin Hood with Flange and Blastgate

Resin Hood

Resin Splash Hoods (6" wide)

86RHL - Resin Splash Hood with light, shield and insert pan
Light on left: 86RHL-L or Light on right: 86RHL-R
 Shipping Wgt.: 4 lbs [1.8Kg] Dimensions: 12" H x 6" W x 10" D

Additional options:

86RHL-LA OR 86RHL-RA
 3" Diameter Flange for connection to dust collector
86RHL-LB OR 86RHL-RB
 3" diameter flange plus blastgate (suction cutoff)

86RHN-S - Resin Splash Hood with shield and insert pan
 Shipping Wgt. 4 lbs [1.8Kg] Dimensions: 12" H x 6" W x 10" D

Additional options:

86RHN-SB
 3" diameter flange plus blastgate (suction cutoff)



Stainless Steel Splash Hood 88D PERMA-GARD SPLASH HOOD

Long lasting, rust-resistant Stainless Steel Splash Hood for all your grinding and polishing applications.

Light on left: 88D-L or Light on right: 88D-R

Shipping Wgt.: 8 lbs [3.6Kg]
 Dimensions: 12" H x 6" W x 10" D

86B STA-KLEEN SHIELD - A Clear acrylic shield is a must for OSHA compliance. Adjustable to any vertical position within 180 degrees for maximum protection from flying debris and wet pumice. Wipes clean with a damp cloth; can be used on all Handler splash hoods and on other models as well. Shipping Wgt.: 2 lbs [1.8Kg] Dimensions: 6" W x 9" L [15cm x 23cm]





DENTURE FLASKS, PRESSES & EJECTORS

WWW.HANDLERMFG.COM

DURABLE BRONZE MANGANESE ALLOY.

Manufactured of durable bronze manganese alloys, Handler flasks and compresses set an exacting standard for the lab technician. Handler presses are manufactured of malleable/ductile iron, grey iron, and alloy steels for durability and continued function. We use only the highest quality materials. Handler pioneered denture processing equipment.



61B TWO FLASK COMPRESS

Our most popular denture compress is built to hold two conventional flasks for simultaneous curing. Sturdily built of bronze alloy, its rustproof cast body will provide years of service. Two stainless steel springs give equalized compensatory pressure during curing operation. A suitable allen wrench, wood capped holding handle and brass lifting handle are supplied with each compress. Flasks not included.

Shipping Wgt.: 8 lbs [3.6 Kg]

Unit Dimensions: 4 1/8" L x 2 1/2" W x 7 1/2" H
[11cm x 6cm x 19cm]

61A ONE FLASK COMPRESS

Shipping Wgt.: 7 lbs [3.2 Kg]

Unit Dimensions: 4 3/4" L x 2 7/8" W x 5 3/4" H
[12cm x 7cm x 15cm]

61C THREE FLASK COMPRESS

Shipping Wgt.: 9 lbs [4.0 Kg]

Unit Dimensions: 5" L x 2 5/8" W x 10 3/4" H
[13cm x 7cm x 27cm]

44G ATLAS GIANT FLASK



When conventional size flasks are not large enough, the 44G should be utilized. Cast of bronze alloy, the 44G is widely used in reconstructive maxillo-facial procedures. The 44G is fitted with three separate sections, a bottom K.O. disc and rear tapered stainless steel guide pins for easier flasking and de-flasking. The 44G is a cast flask in the upper configuration.

Shipping Wgt.: 5 lbs [2.3 Kg]

Unit Dimensions: 4 5/8" L x 4 3/8" W x 2 3/4" H
[12cm x 11cm x 7cm]

44U ATLAS FLASK

This UPPER Flask is forged of special alloy bronze to provide years of durable service. Fitted with hardened stainless steel alloy rear tapered guide pins, this ejector type flask has long been a favorite of leading Prosthodontists, dental schools and commercial laboratories. Dropped forged with glass-like smooth surfaces, models are easily ejected with the aid of the bottom ejection disc.

Shipping Wgt.: 3 lbs [1.4 Kg]

Unit Dimensions: 4" L x 3 3/4" W x 2 1/4" H [10cm x 10cm x 6cm]

44L ATLAS FLASK

This LOWER Flask is forged of special alloy bronze to provide years of durable service, with a slanted heel section to accommodate cases with high condyles. Its tapered rear guide pins, smooth interior and special bronze alloy provide ease of function during flasking and de-flasking operations.

Shipping Wgt.: 3 lbs [1.4 Kg]

Unit Dimensions: 4" L x 3 3/4" W x 2 1/4" H
[10cm x 10cm x 6cm]

48X COM-A-PART FLASK

Round House Type for shade blending of resin teeth, or Processed Temporary Splints. Flask parts separate readily for ease of processing. Correct size for investing a full arch or a partial case. Supplied with insert and bottom knock-out for easy removal of restoration. Designed to resist warpage and distortion, the cast bronze fitted flask is constructed of solid bronze alloy. Supplied with locking wrench.

Shipping Wgt.: 7 lbs [3.2 Kg]

Unit Dimensions: 3 3/8" L x 2 1/4" W x 3 1/8" H
[9cm x 6cm x 8cm]





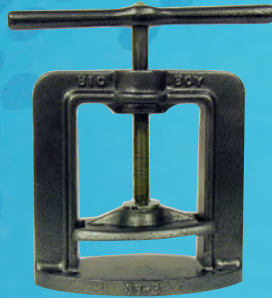
33 LITTLE GIANT

A Flask Press manufactured for pressing a single flask. Constructed of malleable/ductile iron, the Little Giant will provide years of trouble free service under normal pressing procedures. Inside dimensions: 5" wide x 4" max. height [13cm x 10cm]. Order with 38A bench clamps to mount press on countertop. Shipping Wgt.: 14 lbs [5.4 Kg] Unit Dimensions: 7 3/4" L x 3 1/2" W x 7 3/8" H [20cm x 9cm x 19cm]



38 BIG BOY FLASK PRESS

A Heavy Duty Single Flask Press manufactured of malleable/ductile cast iron for durability and long wear, with alloy steel shaft, grey iron handle and malleable/ductile iron pressure plate. Holes in frame allow for easy bench mounting, or 38A Clamps may be utilized for easy bench mounting and/or removal. Big Boy Flask presses are designed for the busy laboratory. Shipping Wgt.: 23 lbs [10.4 Kg] Unit Dimensions: 10" L x 4 1/2" W x 8 1/2" H [25cm x 11cm x 22cm]



38B BIG BOY FLASK PRESS

A Heavy Duty Two Flask Press manufactured of malleable/ductile cast iron. With alloy steel shaft, grey iron handle and malleable/ductile iron pressure plate. Holes in frame allow for easy bench mounting, or 38A Clamps may be utilized for easy bench mounting and/or removal. Both 38 and 38B Big Boy Flask Presses are designed for the busy laboratory.

Shipping Wgt.: 24 lbs [10.9 Kg] Unit Dimensions: 10" L x 4 1/2" W x 10" H [25cm x 11cm x 25cm]



38A BENCH CLAMPS

For use in mounting Models 33, 38, 38B presses to tabletop. Cast of aluminum alloy for rustproof protection. Shipped with mounting screws.

Shipping Wgt.: 1 lb [0.5 Kg] Unit Dimensions: 1" H x 2 1/4" D x 4" L [3cm x 6cm x 10cm]



39 DELUXE MANUAL PRESS

This robust press is built by Handler to give the laboratory technician excellent hand pressing action when trial packing dentures. The Deluxe Press is manufactured from 1" steel plate with a 1" diameter acme threaded center screw.

The large chrome plated handle allows the technician to apply accurate pressure as dictated by the individual case. Provided in a durable baked finish with chrome plated steel supports, handle and center screw, this press will prove a welcome addition to your laboratory.

Shipping Wgt.: 24 lbs [10.9 Kg] Unit Dimensions: 12" H x 6" W x 12" L [31cm x 15cm x 31cm]



44A ATLAS FLASK EJECTOR

Designed to easily eject poured models from No. 44 Atlas flasks with smooth mechanical action. Spring loaded side levers adjust to Upper or Lower Flask configuration with a quick movement of an indicating lever.

Initial insertion separates mid and lower flask sections; final insertion separates model from mid section.

Shipping Wgt.: 5 lbs [2.3 Kg]

Unit Dimensions: 6 1/2" W x 3 1/2" D x 6 1/2" H [16.5cm x 8.9cm x 16.5cm]

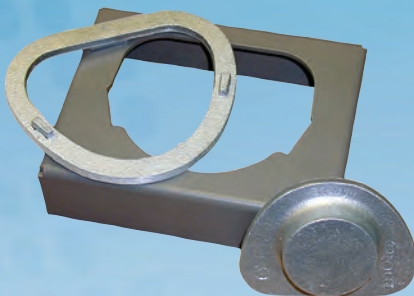


49A KING SIZE FLASK

Dentists and Technicians occasionally require an extra large size flask for a special purpose. The four piece bronze cast flask with substantial dimensions will be found suitable for the investing of large prosthetic appliances or several resin bridges, partials or full dentures at one time. The sections are slightly tapered to allow for easier de-flasking procedures without requiring a special device. Custom King-Sized Flasks available upon request.

Shipping Wgt.: 7 lbs [3.2 Kg]

Unit Dimensions: 3 3/8" L x 3 1/4" W x 2 13/16" D



47 K O EJECTOR

Designed for use in ejecting poured models from 22C Denture flasks, ONLY. Use in conjunction with any Handler Flask Press, the #47 easily ejects models from 22C flasks through smooth mechanical downward action.

Shipping Wgt.: 5 lbs [2.3 Kg]

Unit Dimensions: 5" W x 4 1/2" D x 2" H
[12.7cm x 11.4cm x 5.1cm]

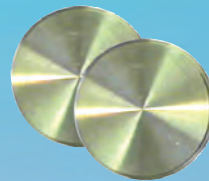


35 SPRING FILLER

A bronze filler which provides flaked cases with compensatory spring action with the aid of two stainless steel springs. Used in Handler presses to provide compensatory spring action during curing of flaked dentures.

Shipping Wgt.: 1 lb [0.5 Kg]

Unit Dimensions: 3 1/2" W x 2 1/2" D x 1 1/2" H
[8.9cm x 6.35cm x 3.8cm]



44D: BRONZE K.O.

Disc for 44 UPPER, LOWER, and Atlas GIANT Flasks. Also fits Varsity Flasks. 22D KO Discs available on special request for older 22C Handler Flasks.

Shipping Wgt.: 1 lb [0.5 Kg]

Unit Dimensions: 2 7/16" diameter x 3/16" H
[7cm x 1cm]



47D DE-FLASKING DISC

An aid designed to help locate denture teeth in a flask processed denture. The disc will help protect teeth during the deflasking procedure. Made of aluminum, the 47D can be used over and over again. For use in conventional type flasks. Packed 12 discs per box.

Shipping Wgt.: 1 lb [0.5 Kg]

Unit Dimensions: 3" L x 2 3/4" W x 3/8" H [8cm x 7cm x 1cm]



CHUCKS & SPINDLES

Handler precision chucks are manufactured of alloy steel, brass or hardened steel. Handler chucks are made in various designs to provide manual, semi-automatic and automatic changing of burs, mandrels, abrasives, buffs and brushes. Chucks made by Handler are known the world over for functionality and reliability. All Chucks shown are for placement onto lathes with standard dental tapered shafts.

MOST POPULAR



18

7L



8T



1-6



7



7B



9



12



13-1



13

7 TAPERED STEEL CHUCK

The 7 tapered chuck is designed specifically for use with buffing wheels, brushes and lead centered wheels. Precision manufactured of alloy steel, this chuck is built for placement onto lathes and polishing motors containing standard dental tapered shafts. Specify 7L (Left) or 7R (Right) when ordering.

Shipping Wgt.: 6 oz [107 g]

Unit Dimensions: 5/8" Shank Diameter x 3 5/8" L [2cm x 9cm]

7B TAPERED BRASS CHUCK

The 7B tapered chuck is designed specifically for use with buffing wheels, brushes and lead centered wheels. The 7B Tapered chuck is made of brass to provide easier on/off placement onto tapered dental shafts, causing less shaft wear. Specify 7BL (Left) or 7BR (Right) when ordering.

Shipping Wgt.: 6 oz [107 g]

Unit Dimensions: 5/8" Shank Diameter x 3 5/8" L [2cm x 9 cm]

1-6 STONE CHUCKS

Stone Chucks are designed to accommodate abrasive wheels with various inside diameters as indicated below. Handler stone chucks are manufactured to exacting standards from quality brass. For use only on tapered lathe shafts. Specify chuck number (below) when ordering.

#1 STONE - for 3/8" [9.5mm] I.D. (hole size) Wheel - RIGHT

#2 STONE - for 3/8" [9.5mm] I.D. (hole size) Wheel - LEFT

#3 STONE - for 5/16" [7.9mm] I.D. (hole size) Wheel -RIGHT

#4 STONE - for 5/16" [7.9mm] I.D. (hole size) Wheel - LEFT

#5 STONE - for 1/4" [6.3mm] I.D. (hole size) Wheel - RIGHT

#6 STONE - for 1/4" [6.3mm] I.D. (hole size) Wheel - LEFT

Shipping Wgt.: 6 oz [107 g]

Unit Dimensions: 5/8" Shank Diameter x 2" L [2cm x 9cm]

9 ARBOR BAND

Designed to accommodate 3/4" diameter x 3/4" wide [1.9cm x 1.9cm] abrasive bands. Manufactured of alloy steel and plated to fit onto standard dental tapered shafts, the abrasive band is held in place by tightening the end screw against the rubber arbor. Specify 9L (Left) or 9R (Right) when ordering. Shipping Wgt.: 8 oz [227 g]

Unit Dimensions: 4 7/8" L x 5/8" Shank Diameter [12cm x 2cm] with a 1/4" Shank Diameter.

8T JACOBS TYPE JR. CHUCK

The 8T is designed specifically for use with small burs and mandrels which do not exceed 1/4" [6.3mm] in diameter. The 8T is built to be a less expensive and semi-precise adjustable chuck for use on lathes with tapered shafts. This chuck opens with a CCW twist and closes with a CW twist. Specify 8T (right) or 8T-L (left) when ordering.

Shipping Wgt.: 8 oz [227 g]

Unit Dimensions: 2 1/4" L x 1" Shank Diameter [6cm x 3cm]

18 ATLAS PRECISION CHUCK

The 18 Atlas chuck is a precise "Jacobs type" chuck for use with chuck accessories having a diameter of .001" [0.03mm] to .250" [6.4mm]. The 18 Atlas chuck attaches to the right shaft of a dental lathe with standard dental tapered shafts. Machined to precision limits, the 18 Atlas provides the technician with concentricity unmatched by any other adjustable chuck with no run-out and no vibration. For Right shaft only. Shipping Wgt.: 1 lb [0.5 Kg]

Unit Dimensions: 2 1/2" L x 1 1/4" Shank Diameter [6cm x 3cm]

12 STONE CHUCK

Designed with a 1/4" [0.6cm] shank for use in Jacobs type chucks. This stone chuck accommodates abrasive stones with 1/4" [0.6cm] I.D. arbor only.

Manufactured of alloy steel and plated.

Specify 12L (Left) or 12R (Right) when ordering.

Shipping Wgt.: 4 oz [113 g]

Unit Dimensions: 2 3/16" long x 3/4" Shank Diameter [6cm x 2cm] with a 1/4" Shank Diameter.

13 ARBOR BAND CHUCK

Designed with 1/4" [0.6cm] shank for use in Jacobs type chucks. Accepts 3/4" x 3/4" [1.9cm x 1.9cm] abrasive arbor bands. Manufactured of alloy steel and plated. Specify 13L (Left) or 13R (Right) when ordering.

Shipping Wgt.: 4 oz [113 g]

Unit Dimensions: 2 5/8" L x 3/4" Shank Diameter [7cm x 2cm] with a 1/4" Shank Diameter.

13-1 TAPERED CHUCK

Designed with 1/4" [0.6cm] shank for use in Jacobs type chucks. This tapered chuck is built to accept small buffs, brushes and lead-centered wheels. Made of alloy steel and plated. Specify 13-1L (left) or 13-1R (right) when ordering.

Shipping Wgt.: 4 oz [113 g]

Unit Dimensions: 2 5/8" L x 1/2" Shank Diameter [7cm x 1.3cm] with a 1/4" Shank Diameter.

67A AUTO-CHUCK KIT

An automatic chuck kit designed specifically for the changing of the chuck attachments listed below while lathe is in motion. The Auto-Chuck provides the user with fast chuck changing at a lower cost than many precision chucks. This chuck is designed for gross reduction and rough trimming. Easily installs onto a dental tapered shaft. The 67A kit includes a wrench for tightening the bur adapter. Specify 67AR (right) or 67AL (left) when ordering.

Kit includes one of each:

67-0 Auto-chuck

67-4 Wrench

67-5 Stone Chuck (Right or Left)

67-7 Tapered Chuck (Right or Left)

67-8 3/32" [0.2cm] Bur Chuck (Right or Left)

67-9 Arbor Chuck (Right or Left)

Shipping Wgt.: 1 lb [0.5 Kg]

Unit Dimensions: 5" L x 3 3/4" D x 1" H [12.7cm x 9.5cm x 2.6cm]



67A AUTO CHUCK KIT

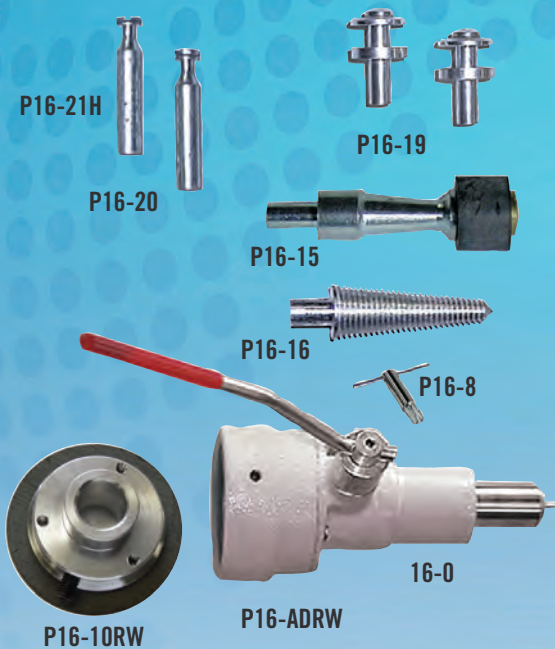


67-0 AUTO-CHUCK

Auto-Chuck only for use with above mentioned attachments. Automatically changes above chucks while lathe is in motion.

Shipping Wgt.: 1 lb [0.5 Kg]

Unit Dimensions: 2 1/2" L x 1" Diameter [6cm x 3cm]



16 CHUK/CHANGER

The Handler Chuk/Changer was designed to provide full automatic, precision changing of 1/4" [6.3mm] and 3/32" [2.4mm] diameter burs, mandrels and chuck accessories with the slight movement of a handle while the motor is turning. The Chuk/Changer provides the technician with exacting concentricity and quick, easy changing of various chucks which greatly speeds grinding, polishing and finishing procedures. The 16 Chuk/Changer is installed on the right side of the lathe and is adaptable to most types of dental motors, including Red Wing and Baldor (special adapter required). The 16 Chuk/Changer is shipped complete with chuck accessories as follows:

P16-15 Arbor Band Chuck

P16-16 Spiral Tapered Chuck

P16-19 Stone Chucks

P16-20 Mandrel (1/64)

P16-21H Mandrel (1/32)

P16-8 Collet Wrench

P16-10RW Clutch

P16-ADRW Adapter

NOTE: Available for left side Model 16L.

Shipping Wgt.: 3 lbs [2.3 Kg]

Unit Dimensions: 8 3/4" L x 4" W x 6 1/4" H [22cm x 10cm x 16cm]

16D

The 16D Accela/Rotor attachment turns your Red Wing Lathe into a High Speed alloy grinder. It attaches to the right side of your Red Wing lathe and provides 12,000 and 24,000 rpm speeds for proper metal finishing. Shipped complete with all necessary guards, instructions, light, and high speed spindle.

Shipping Wgt.: 11 lbs [5.0 Kg]

Unit Dimensions: 14" W x 12" D x 17" H [36cm x 31cm x 43cm]

INSTALL ON
YOUR 26 OR
26A RED WING
LATHES





HANDPIECE with SyncroTorque Motor

Handler's laboratory handpiece is made to exacting standards for the technician. Variable speed foot switch provides flexibility and speed control.



500-3 SYNCRO/TORQUE

One of the highest rated lab handpieces in the industry, the Syncro Torque III provides excellent torque and concentricity. A Handler Exclusive, the Syncro/Torque III is a precision balanced electronic handpiece for detailed, sophisticated lab work. Its hand held micro-motor provides the technician with 0 to 35,000 rpm variable speed which may be preset at the table top control box and varied with an accelerator type foot switch.

The foot switch can also be side mounted as a knee treadle. Changing of standard 3/32" [2.4mm] burs and mandrels is made easy with a twist of the handpiece body to open the collet, and a reverse twist to close. Maintenance is made easy by un-threading the vibration free handpiece to remove the chuck for cleaning of the collet. The 500-3 Syncro/Torque is shipped complete with handpiece, micro-motor, variable speed foot switch and control box. 115V/60Hz
Shipping Wgt.: 12 lbs [5.4 Kg]
Unit Dimensions: 7 1/8" L x 6 3/4" D x 2 5/8" H [18cm x 17cm x 7cm]

Available in 230V/50Hz — Model 500-3E



P500-1
Handpiece Only

P500-2
Motor Section
of Handpiece

P500-3
Chuck Section
of Handpiece

P500-4
Handpiece Cord

P500-13
Collet

PROCESSING EQUIPMENT

78-1ATLAS VARIABLE SPEED JUNIOR VIBRATOR

A three speed vibrator for use by the dentist or smaller laboratory. This is designed for compactness, longevity and intermittent use. Its 4" [10cm] diameter, removable, rubber covered table top makes it an ideal addition to any small lab work bench where a vibrator will be utilized for short periods to remove air from investment.

Finished in a durable, baked coating. 115V/60Hz.

Shipping Wgt.: 6 lbs [2.7 Kg]

Unit Dimensions: 4 1/2" W x 4 1/2" D x 4" H [11cm x 11cm x 10cm]

Available in 220V/50Hz — Model 78-1E



78-RK ATLAS HEAVY DUTY TRI-SPEED VIBRATOR

DUAL FREQUENCY VARIABLE SPEED

The NEW Handler 78-RK Heavy Duty Vibrator is built for durability and rugged use.

The newly designed 78-RK has two frequencies each with variable speed. The HIGH and LOW are variable to allow a technician to vibrate a mixing bowl or flask at the correct speed for the plaster, stone or viscous solution to de-bubble. The fully covered large rubber table is built to hold larger flasks and mixing bowls.

The rubber top is removable for easy cleaning and replacement. Four soft rubber feet hold the 78-RK in place during the heaviest vibrating cycles. The unit is coated with a baked enamel finish. Built to last for many years. 115V/60Hz.

Shipping Weight: 11 lbs [5 Kg]

Unit Dimensions: 8" W x 6 1/2" D x 4 1/2" H

Available in 220V/50Hz — Model 78-RKE



72 ATLAS-APEX TYPE ARTICULATORS

Atlas articulators have been used by leading dental technicians and dentists for many years. The 72 is cast of non-rusting metal with a center support for durability and better plaster retention.

Machined to produce maximum accuracy for this type articulator, the 72 Apex type articulator provides durable service.

Shipping Wgt.: 1 lb [0.5 Kg]

Unit Dimensions:

3 1/2" W x 5" D x 2 1/2" H [8.9cm x 12.7cm x 3.8cm]



SLICK-88/SPL-88 DRY TEFLON/SILICONE SPRAY

*THE ONLY INDUSTRY APPLICATION

TO COMBINE TEFLON & SILICONE

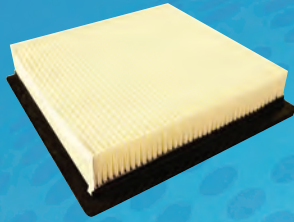
SPL-88 is formulated from the two best wet/dry separating/lubricating agents: Silicone and Teflon. It is a non-flammable, environmentally safe dry spray. It is chemically bonded in a patented process to produce an extremely effective dry spray that is ideal for separating, protecting and/or lubricating.

Shipping Wgt.: 2 lb [1.0 Kg]

Unit Dimensions: 3" Diameter x 8" H [7.6cm x 20.3cm]

REPLACEMENT FILTERS FOR DUST COLLECTORS

NOTE: The fiberglass filters will not be effective for gypsum dust. They cannot be used for Aluminous Oxide (ALO). They are effective with Porcelain, metal, and acrylic dusts.



550-F/52-F

A 6" X 6" x 2" pleated cartridge filter that is reusable and replaceable, this filter will collect dust particles of .5 microns and larger. The filter should be cleaned regularly by removing from the unit and tapping it out over a waste container and should be replaced every 6 - 9 months.
Order 550-F for Models 550 and 575
Order 52-F for Models 52CSU and 52CFI
Shipping Weight: 1 lb [0.5Kg]
Unit Dimension: 6" x 6"



62 DF

Set of 6 disposable filters for model 62 Super Sucker
Shipping Wgt: 1 lb [0.5Kg]



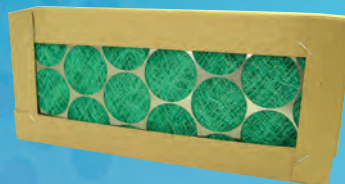
62-IIDF

Set of 6 double-walled disposable filter bags for model 62-II Super Sucker II.
Shipping Weight: 1 lb [0.5Kg]



62-PF

Polyester filter for model 62 Super Sucker
Shipping Wgt: 1 lb [0.5Kg]



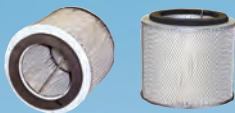
62-IICF

Charcoal filter for model 62-II to aid in the removal of acrylic monomer odors
Shipping Wgt: 1 lb [0.5Kg]
Unit Dimensions: 9 3/4" x 4 1/4" x 1 1/2"



62 CF

Charcoal filter for model 62 to aid in the removal of acrylic monomer odors
Shipping Wgt: 1 lb [0.5Kg]
Unit Dimensions: 12 3/4" x 6 1/4" x 1 3/4"



Drum Cartridge Filters

60UDC - Filter for 60UFC
60FC - Filter for 60 Series, 75 Series, 77 Series and 90 Series Dust Collector with drum cartridge filter.
101FC Filter for 101 Dust Collector
103FC - Filter for 103 Dust Collector
105FC - Filter for 105 Dust Collector

Drum Cartridge retro fit kits available for selected models with cloth bags. Call for details.



Cloth Bag Filters

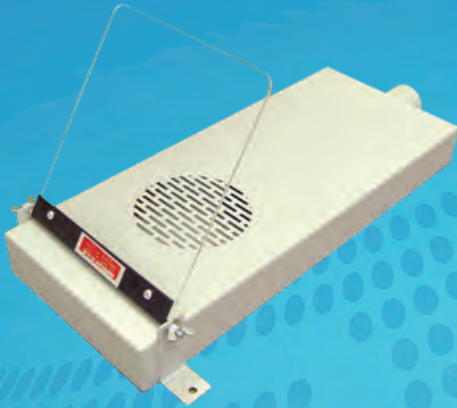
60UFB (Set of 14 for Model 60U-D)
60UFBP (Set of 13 Polyester for Model 60U)
75 FB (Set of 24 for Models 75 & 77)
101 FB (Set of 24 for Model 101)
103 FB (Set of 30 for Model 103)
105 FB (Set of 30 for Model 105)



Fiber Glass Filters

60A - 12"X25"X2"
(Set of 2 for Models 60C-TS and 60D)
60AA - 12"X32"X2"
(Set of 2 for Models 60C-1and 60D-1)
65A - 10"X10"X2"
(Set of 2 for Models 66A and 66D)
66B - 6"X6" (for Model 66 PORTA-VAC)
76D-F - 10"X12"X2"
(Set of 2 for Model 76D)
90AA - 12"X32"X2"
(Set of 3 for Models 90C and 90D)

DUST COLLECTORS ACCESSORIES



210T IN-DRAWER SUCTION

210T In-Drawer Suction Attachment is designed to be placed in the center drawer of a technicians bench and connect to a suction hose behind the drawer. Complete with clear acrylic Sta-Kleen shield, this delivers suction to users of handpieces while protecting technician from grinding and polishing dusts created by the handpiece. Shipped in a durable, baked finish warm gray. Please specify if other color required.

Shipping Wgt.: 5 lbs [2.3 Kg]

Unit Dimensions: 6 1/8" W x 14 1/2" D [39cm x 46cm] with rear 1 1/2" [4cm] oval suction inlet Height: 1 3/4" [4cm]



Model 66C-1

Model 66C-2

66C-1 GRIND-N-TRAY SINGLE SHIELD

A single shielded tray for use in collecting dusts created by handpiece grinding. This tray is designed to fit comfortably into existing bench drawers and contains a bottom suction hole with cut-off.

Its clear acrylic shield flips up to provide eye protection while channeling dusts into the opening of the tray. Finished in a durable, baked coating.

Shipping Wgt.: 4 lb [1.8 Kg]

Unit Dimensions: 10" W x 6" D x 1 1/2" H [25cm x 15cm x 4cm]

Available with 2 acrylic shields - Model 66C-2

87210 FISHMOUTH

This fishmouth is designed for use on the bench top. Supplied with a 5 1/2" x 3" [14cm x 8cm] diameter rear duct, the 87210 may be connected to a dust collector via flexible ducting or directly into a 210BG Blast Gate which is mounted on the vertical riser of a laboratory bench. Manufactured of Quality Resin which is impervious to germicides, this fishmouth is contoured for use with a Lathe or a handpiece.

Shipping Wgt.: 3 lbs [1.4 Kg]

Unit Dimensions: 7" H x 12" D x 6 1/2" W [18cm x 30cm x 17cm]



87 FISHMOUTH WITH BLAST GATE

For use on the bench top to assist in the collection of grinding and polishing debris while connected to a dust collector. The fishmouth is a wide-mouthed type hood which directs debris created by lathe or handpiece operations into a dust collector. Manufactured of Quality Resin which is impervious to germicides, the 87 is fitted with its own 3" [7.6cm] diameter suction cut-off. The fishmouth is contoured for use with a Lathe or a handpiece.

Shipping Wgt.: 3 lbs [1.4 Kg]

Unit Dimensions: 7" H x 12" D x 6 3/4" W [18cm x 30cm x 17cm]



66C-53 FLANGE

A 3" [7.6cm] diameter aluminum flange for mounting onto splash hoods or bench risers to provide a rigid connection for attachment of flexible ducting.

Shipping Wgt.: 1 lb [0.5 Kg]

Unit Dimensions: 4" L x 4" W x 1 1/2" H [10cm x 10cm x 4cm]



210BG BLAST GATE

For mounting on vertical riser of metal or wooden benches. Sliding cut-off opens and closes passageway to dust collector. Flanged on both sides for easy attachment to 3" [7.6cm] flexhose on rear side, and insertion of 87210 fishmouth on front side. Finished in baked, durable coating.

Shipping Wgt.: 4 lbs. [1.8 kg] Unit Dimensions: 6 3/4" L x 3 3/4" W [17cm x 10cm]

MODEL TRIMMER ACCESSORIES

MODEL TRIMMER REPLACEMENT WHEELS

Handler now provides reversible, reinforced CARBO-DENT WHEELS for all its model trimmers. Handler model trimmer wheels fit most other makes of model trimmer; call us for information.



**Reinforced
for safety!**

For Handler Models 31 and 31X and most other model trimmers with 10" diameter wheel

Standard Coarse Replacement Wheel - Order 31A-C
Shipping Wgt.: 1 lb. [0.5Kg]

For Handler Models 32, 32X and 32-3/4 and most other model trimmers with 12" diameter wheel

Standard Coarse Replacement Wheel - Order 32A-C
Shipping Wgt.: 1 lb. [0.5Kg]

Other grits available:

Grit	10"	12"
Extra Fine	31A-XF	32A-XF
Fine	31A-F	32A-F
Medium	31A-M	32A-M
Extra Coarse	31A-XC	32A-XC



31UFAST

Activate model trimmer and water flow simultaneously with the foot switch on our 31UFAST – Universal Foot Activated Solenoid Tap (patent pending). Walk away when you are finished, automatically deactivating trimmer and water supply. Reduce water consumption and electricity use; works with any model trimmer; easy to operate, easy to install, can be pre-installed on any new Handler trimmer. Shipping Wgt. 3 lbs [1.2Kg]



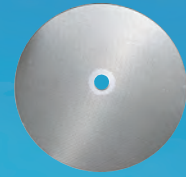
32-07GK GASKET

Replacement gasket for all Handler model trimmers; cut-to-fit gasket ships complete with adhesive material. Shipping Wgt.: 1 lb [0.5 Kg]



299 PLASTER TRAP

A plaster/solids trap designed to settle out and entrap solids such as plaster, stone, etc. created in dental laboratory. Made of water grade cast iron with stainless steel insert and cover, this plaster trap will meet local plumbing codes and help keep your drains free of solid waste buildup. Built to provide years of service. Top disconnects for easy removal of insert. NOTE: UPC LISTED. Shipping Wgt.: 35 lbs [15.9 Kg] Unit Dimensions: 11" diameter x 12" high [27.9 cm x 30.5 cm] Inside Diameter: 8.5" [21.6 cm]



Diamond Wheels

32KD (12") - 31KD (10")

Available in 10" and 12" diameters, Kohinoor diamond wheels provide fast, balanced, quiet cutting of gypsum lab models. Designed for the busy laboratory that trims thousands of models, Handler's diamond model trimmer wheel includes a 3 year warranty.

31KD – for Handler models 31 and 31X and most other trimmers with 10" diameter wheels

32KD – for Handler models 32, 32X, 32-3/4 and most other trimmers with 12" diameter wheels

Dry Model Trimmer Accessories

Set of coated abrasive discs available:

Grit	10" (6 Discs)	12" (4 Discs)
Extra Fine	31D-XF	32D-XF
Fine	31D-F	32D-F
Medium	31D-M	32D-M
Coarse	31D-C	32D-C
Extra Coarse	31D-XC	32D-XC



Starter kit of coated abrasive discs, plastic back-up plate and compensating washer

31Y - for dry trimmers with 10" diameter wheels (6 abrasive discs)

32Y - for dry trimmers with 12" diameter wheels (4 abrasive discs)



32-15 WATER SOLENOID

An excellent time saving device, this solenoid valve enables the user to simultaneously active power and water using the model trimmer on/off switch; mounts on trimmer for connection to water line with copper tubing. Shipping Wgt.: 2 lbs [0.9 Kg]



32SHLD SAFETY SHIELD

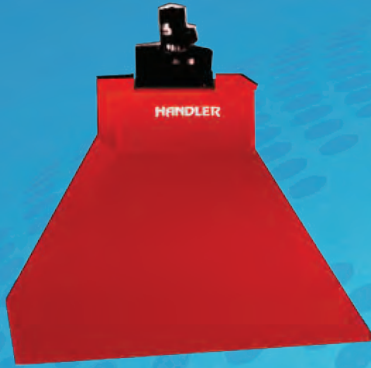
Handler designed the 32SHLD to provide adjustable protection against flying debris, a must for OSHA compliance. A clear acrylic shield is attached to a 13" adjustable arm: a strong magnetic base adheres to any magnetic surface, and can be used at any workstation where dust and debris are present.

Replacement shield only – P32SHLD-01

Shipping Wgt.: 1 lb [0.5 Kg]

Unit dimensions: 8" W x 13" [20.3cm x 33cm]

LAB BENCH ACCESSORIES



236FH-2 FUME HOOD

Handler has designed a hood with 600 CFM suction capacity to remove fumes and odors from laboratory processing. The fume hood is mounted onto a studded wall directly above the fume source and the exhaust ducted to a suitable location outside your building. Its size makes it convenient to install in most laboratories; it is constructed of heavy gauge sheet steel and powder coated in a durable, baked finish.

Shipping Wgt. 125 lbs. [56.7 Kg]

Unit Dimensions: 42"W x 20"D x 39 3/8"H



81C



81C-SS

81C PLASTER BIN

A three compartment plaster bin which may be hung on the wall or placed on a benchtop. The 81C is manufactured of heavy gauge sheet steel and finished in a durable, baked warm-gray finish. Each compartment of this plaster bin is built to hold 25 lbs [11.3 Kg] of stone or plaster. Special design prevents gypsums from pushing out from lower access door when plaster bin is being filled.

Shipping Wgt.: 23 lbs [10.4 Kg]

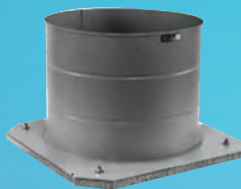
Unit Dimensions:

21" W x 10" D x 18" H [53cm x 25cm x 46cm]

Available in Stainless Steel - Model 81C-SS



74CW



235W

74CW/235W CASTING WELL

A casting well made of heavy gauge sheet steel with steel and fiberboard base, finished in a durable, baked coating.

Shipping Wgt.: 51 lbs [23.1 Kg]

Unit dimensions: Well: 19" Diameter x 14 1/2" high,

Base: 19 1/2" x 19 1/2"

Model 74CW – with hinged cover 20 7/8" x 20 7/8"

Model 235W – for installation inside metal benches



74 EXAC-U-CAST

A Centrifugal Casting Machine designed for use in casting precious and non-precious metals. The Exac-U-Cast features a hardened steel center shaft which is mounted between two double shielded ball bearings. A large centrifugal spring powers the heavy duty casting arm during casting operations. Unit sold complete with 1 3/4" [4.4cm] stainless casting ring, 1 3/4" [4.4cm] rubber sprue former, three casting ring cradles for popular size casting rings, flask tongs and assortment of DLA Hollow Plastic Sprues.

Shipping Wgt.: 18 lbs [8.2 Kg]

Unit Dimensions: 16 1/2" Diameter x 10 1/2" high [24cm x 26.7cm]



225BLK LAB CHAIR

Ergonomically designed black lab chair designed for comfort and durability. Stable reinforced base with heavy duty stationary glides; contoured, tilting seat with easy adjustment for height and back.

Shipping Wgt.: 30 lbs [13.6 Kg]

Unit dimensions:

Seat: 18" W x 17" D x 1 1/2" Thick

Back: 17" W x 12" H x 1" Thick

Height: 16 1/2" – 21 1/2"



62FS FOOT SWITCH

Provides on/off continuous action; push to turn on, push it again when you want to turn it off. Comes complete with 8 foot cord. Perfect for use with equipment items up to 1/2 HP, 10 amps, particularly Handler dust collector models 62, 62-II and 60U.



218 LEVER BLOW GUN

Metal, nickel plated blow gun activated by depressing lever located on top of gun. Connects to standard 1/4" [0.6cm] NPT air line.
Shipping Wgt.: 1 lb [0.5 Kg]
Dimensions: 4 3/16" L x 2" H x 1 1/8" W [11cm x 5cm x 3cm]



217 PUSH BUTTON BLOW GUN

Metal, nickel plated blow gun activated by depressing push button on top of gun. Connects to standard 1/4" [0.6cm] NPT air line.
Shipping Wgt.: 1 lb [0.5 Kg]
Dimensions: 3 1/2" L x 1 5/8" H x 13/16" W [9cm x 4cm x 1cm]



216 RUBBER BLOW GUN

A rubber tipped air blowgun for tabletop and bench use. Connects to a standard 1/4" [0.6cm] NPT air and activates with the bending movement of the rubber nozzle.
Shipping Wgt.: 1 lb [0.5 Kg]
Dimensions: 3 1/16" L x 5/8" W [8cm x 2cm]



219 RUBBER AIR HOSE

Rubber covered braided air hose. Five feet in length with 1/4" [0.6cm] NPT fittings both sides.
Shipping Wgt.: 1 lb [0.5 Kg]
Dimensions: 1/2" Diameter x 60" Long [1.3cm x 152.5cm]



220 NYLON COIL AIR HOSE

Coiled nylon air hose with 1/4" [0.6cm] NPT swivel fittings both ends. 10 feet (3 meters) in length with coil extended fully.
Shipping Wgt.: 1 lb [0.5 Kg]
Dimensions: 6" Diameter x 9" Wide (compressed) [15.2cm x 22.9cm]



221 RAPID CONNECT-DISCONNECT

Air coupler designed for rapid connection or disconnection of 1/4" [0.6cm] NPT air line. Zinc plated for extended service.
Shipping Wgt.: 1 lb [0.5 Kg]
Dimensions: 2 7/8" L x 3/4" W [7cm x 2cm]



210-0 BENCH MOUNTED FLANGE

A finely finished chrome plated cast bronze 3/8" [1cm] NPT fitting for mounting single air, gas or water valves.
Shipping Wgt.: 1 lb [0.5 Kg]
Dimensions: 1 13/16" W x 2 3/4" L [5cm x 7cm]



210-90 TURRET

A 90 degree turret for mounting two air or gas valves at a 90 degree angle to tabletop. 3/8" [1cm] NPT pipe connection.
Shipping Wgt.: 1 lb [0.5 Kg]
Dimensions: 3" H x 2" Diameter [7.6cm x 5.1cm]



210-CF CHROME CAST FLANGE

Designed for use with 3/8" NPT air or gas valves, this chrome plate, cast bronze flange provides an aesthetic positive connection to all 3/8" air or gas connections.
Shipping Wgt.: 1 lb [0.5 Kg]
Unit Dimensions: 2 1/2" Diameter x 2 1/4" Deep [6.40cm x 5.70cm]



210A AIR VALVE

Tapered air valve with positive lever shut-off control and 3/8" [1cm] NPT pipe connector. Chrome plated with rear chrome backplate.
Shipping Wgt.: 1 lb [0.5 Kg]
Dimensions: 3/8" W x 11/16" L [1cm x 2cm]



210G GAS VALVE

Tapered gas valve with positive lever shut-off control and 3/8" [1cm] NPT pipe connector. Chrome plated with rear chrome backplate.
Shipping Wgt.: 1 lb [0.5 Kg]
Dimensions: 3/8" W x 11/16" L [1cm x 2cm]



HANDLER

RED WING INTERNATIONAL



Your **New Lab** Design Starts Here!

We offer full lab functionality and performance to fit in any space and any budget

LAB FURNITURE



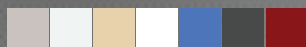
AMERICAN-MADE DURABILITY IN DENTAL LAB EQUIPMENT

HANDLER MANUFACTURING, INC.
www.handlermfg.com

Toll Free: 800.274.2635

612 North Avenue E., Westfield N.J. 07090
Tel (908) 233-7796 Fax (908) 233-7340

Our Color Selections:



Warm Gray, Colonial White,
Designer Beige, Eagle White,
Blue Heaven, Charcoal, Merlot

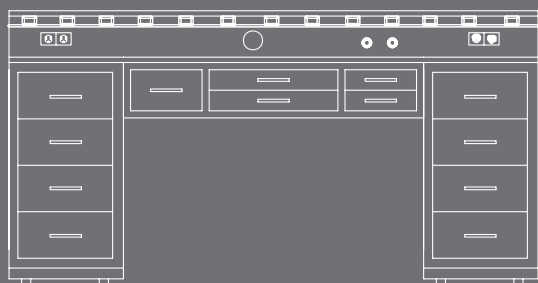
Modular, Flexible Design and Easy Assembly

Custom Benches and Cabinets
Built to Your Specifications.
Call us for a free consultation.

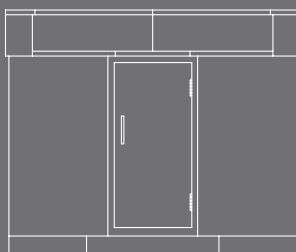


All Benches and Cabinets Available in:

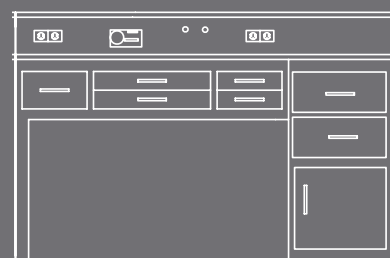
2-TECHNICIAN CORNER WORK STATION



311 BENCH



253 CORNER CABINET



213 CERAMIST BENCH

Benches Specially Designed for Dental Lab Operations

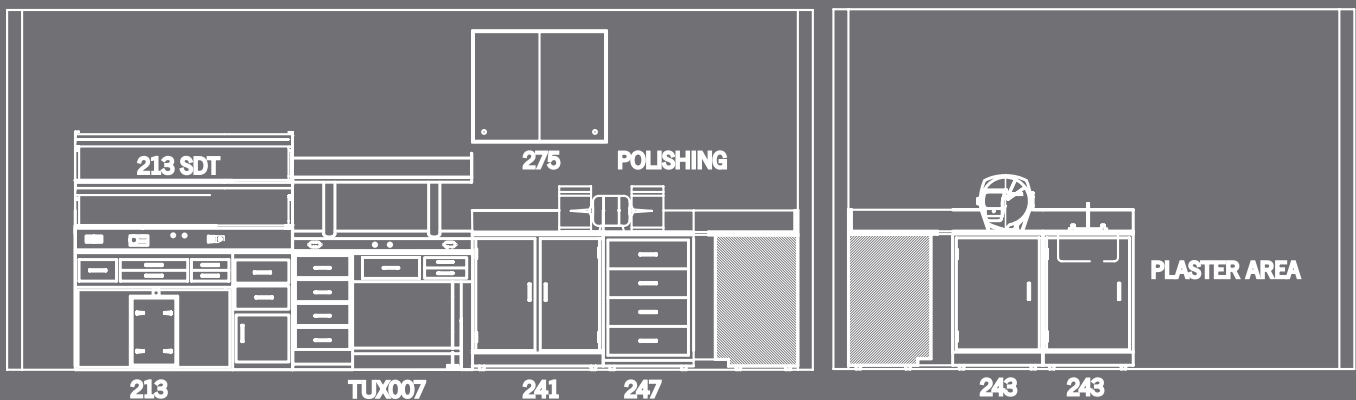
SMALL FULL SERVICE LAB





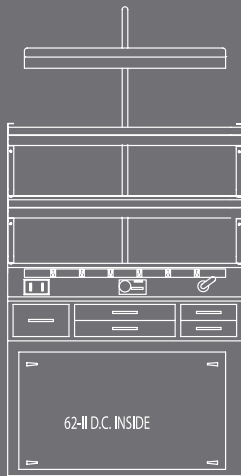
DENTIST OFFICE LAB

Modular Cabinets for Flexible Design & Ease of Assembly





GROUP PRACTICE

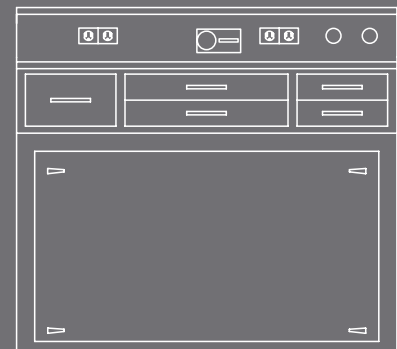


PTL-215SP BENCH

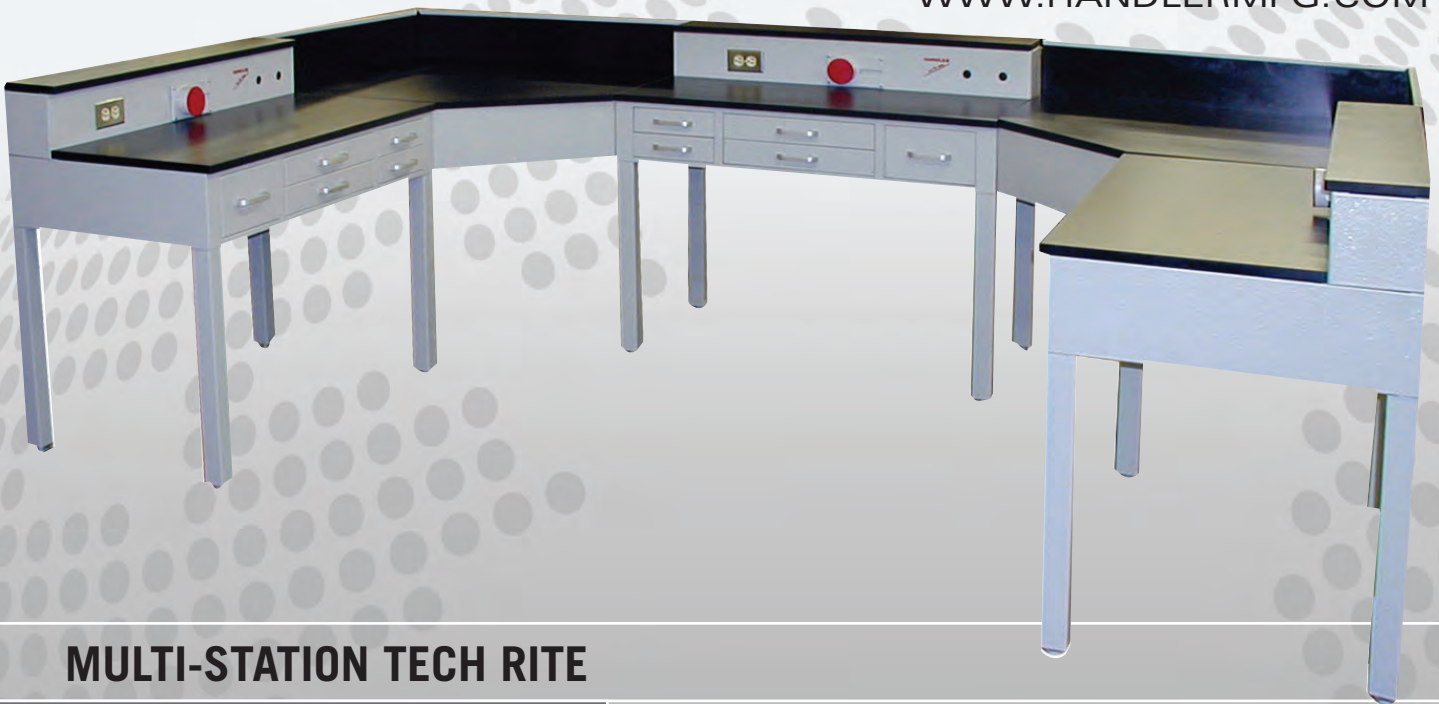
Customized Solutions

Custom Benches and Cabinets Built to Your Specifications
Stainless Steel Tops with Raised Edge to Prevent Water Runoff
Special Shelving for Storage or Holding Burnout Ovens
Slide Out Trays Installed for Cabinet Curing Units or Other Needs

4-TECHNICIAN DENTURE WORK BENCH



215WS BENCH



MULTI-STATION TECH RITE



211 BENCH

Durable, Rugged
Resistop® Countertops

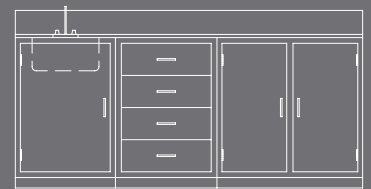
All Benches and Cabinets Available in:



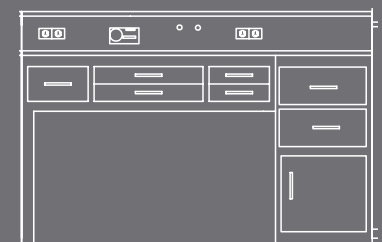
CORNER WORK STATION



Model 213CWS



231 BENCH



213 BENCH



COMMERCIAL - HOSPITALS, GOVERNMENT AND EDUCATION



PRO TECH *Lite*

Sensible Design Combining Art & Engineering

Now full lab functionality and performance fits comfortably in any space and any budget.

The PTL-215SP is engineered to provide affordable and durable functionality with style and performance. As the newest addition to Handler's Pro Tech Lite bench line, the PTL-215SP is the most comprehensive work station there is. Standard with the PTL-215SP is a full 24" deep work surface free of obstacles for maximum work area and the list of standard components is long.

- All 18 gauge welded steel construction with an oven-cured powder-coated painted finish
- Spacious 6" riser or chase to run air, gas and electric lines
- Totally enclosed, powerful and quiet 62-II Dust Collector pre-wired for ease of operation
- Double tier shelf to hold cases conveniently
- Dual fluorescent bulb overhead lighting mounted on stylish and strong support with the pre-wired light switch
- Six outlet pre wired power strip
- Removable 16" x 12" stainless steel work surface protector
- Laboratory grade solid, smooth Resistop® work surface that resists stain and scratches
- Two suction inlet options
 - Bench top 3" suction inlet with blast gate
 - In drawer suction complete with protective acrylic shield and padded comfort arm rest
- Four drawers for storing tools and equipment
- Easy set-up and assembly
- Dimensions: 42"W x 30"D x 32" H work surface



PTL-215SP



Streamline your lab operation with the **New Handler Pro Tech Lite Bench Series**

PTL-211 Workstation

Shipping weight: 175lbs

Dimensions: 36" W x 34" H x 26" D



- Sturdy steel construction
- Leg levelers
- Durable oven-cured powder-coated finish
- Light weight – 34"W x 24"D Work surface
- Power strip
- In drawer suction
- Resistop® work surface with surround wrap
- Stainless steel work surface protector
- Pre-installed air hose and rubber blow gun
- Padded, removable comfort arm rest
- Compact space design
- European styling
- No assembly – easy install
- Affordable price

PTL-231

Petite Plaster Bench

Shipping weight: 185lbs

Dimensions: 35" W x 36" H x 24" D



- Sturdy steel construction
- Leg levelers
- Durable oven-cured powder coated finish
- Light weight – 35"W x 24"D work surface
- Resistop® sink and drain
- Gooseneck lab faucet
- Optional in drawer plaster bin liner
- Optional kick plate hands free water activation
- Resistop® work surface
- Compact space design
- No assembly – easy install
- Affordable price

www.handlermfg.com
800.274.2635

Contact Handler for Free lab layout service.
No lab is too small or too big.

LABORATORY WORK BENCHES

Handler's work stations and cabinets are built of heavy gauge sheet steel and powder coated for longevity and durability.

211 TECH-RITE BENCH

Five drawer technician's bench with resistop. Resistop is similar to man made slate. Built of heavy gauge sheet steel with heavy gauge tubular steel legs, the 211 is shipped complete with four legs with leg levelers, duplex electrical outlet, suction inlet and knock-outs for air and gas valves. This bench has an oven-cured, powder-coated finish and Resistop® Countertops. *NOTE: Gas and air valves as shown are at additional charge.

Shipping Wgt.: 170 lbs. [77.1 Kg]

Unit Dimensions: 42" W x 24 1/2" D x 32" to work surface
[107cm x 62cm x 81cm]

with 42" W x 6 1/2" D x 6" H

Riser [107cm x 17cm x 15cm], mounted rear



213 CERAMIST BENCH

This seven drawer bench is designed particularly for the ceramist. In addition to the two larger side drawers which will accommodate large porcelain jars, its side cabinet contains a hinged door and compartment for a vacuum pump or other accessories. The side cabinet is shipped for assembly on the right side of the bench. Built of heavy gauge sheet steel, the Tech-Rite Ceramist Bench is shipped complete with legs, duplex electrical receptacle, suction inlet and knock-outs for air and gas valves. This bench has an oven-cured, powder-coated finish and Resistop® Countertops.

Specify placement of side cabinet - LEFT or RIGHT.

Shipping Wgt.: 270 lbs. [122.4 Kg]

Unit Dimensions: 58" W x 24 1/2" D x 32" to work surface
[147cm x 62cm x 81cm].

Bench contains 58" W x 6 1/2" D x 6" H

Riser [147cm x 17cm x 15.2] mounted rear

215SP SINGLE PEDESTAL BENCH

Five drawer single technician's bench with Resistop tops. Bench is supported by a 17" deep x 42" wide [28cm x 107cm] single pedestal. The 215SP contains a 42" wide x 6 1/2" deep x 6" high riser [107cm x 17cm x 15cm] mounted rear with one duplex receptacle, suction inlet and knock outs for air and gas valves in the vertical riser. This bench must be secured to the wall of the laboratory or installed to the floor as a free standing bench. May be combined with additional benches to form a free standing or wall mounted island of benches. Constructed of heavy gauge sheet steel with an oven-cured, powder-coated finish and Resistop® Countertops.

Shipping Wgt.: 225 lbs. [102 Kg]

Unit Dimensions: 42" W x 30 1/2" D x 32" to work surface
[107cm x 77cm x 81cm]





215WS PEDESTAL BENCH

A two technician pedestal bench containing five drawers for each technician. Benches are mounted face to face supported by pedestal. Bench also includes a 60U dust collector for two technicians, two fishmouths, flexible ducting, clamps, blastgates and two lighted remote switches mounted on vertical risers.

Supplied with Resistop® tops, and an oven-cured, powder-coated finish. *NOTE: Gas and air valves as shown are at additional charge.

Shipping Wgt.: 450 lbs. [204.1 Kg]

Unit Dimensions: 42" W x 49" D x 32" to work surface
[107cm x 125cm x 81cm]

Riser is 42"W x 13" D x 6" H [107cm x 33cm x 15cm]

Available without dust collector - Model 215

800 DEXTERITY 2000 WORKSTATION

Handler has developed a new workstation to satisfy the ergonomic requirements of the laboratory technicians. The Dexterity 2000 Workstation is a modern, practically designed bench which is sturdy, comfortable, and durable. Workstations available in 42", 48" and 60" wide. Varying widths are available on special order.

800

Mechanically Adjustable Height Bench 42"W X 30"D Steel construction with laminated top workstation. 12"D X 30"W shelf, dust collector, light, two duplex outlets and knock outs for gas and air. Shipping Wgt: 500 lbs

801

Mechanically adjustable height bench 48"W x 30"D with laminated workstation top. 12"D X 30"W shelf, dust collector, light, two duplex outlets and knock outs for gas and air. Shipping Wgt: 525 lbs

802

Mechanically adjustable height bench 60"W x 30"D with laminated workstation top. 12"D X 30"W shelf, dust collector, light, two duplex outlets and knock outs for gas and air. Shipping Wgt: 575 lbs

P901-04: EXTRA SHELF, 12"D X 30" W SOLD SEPARATELY

P800-1: SET OF THREE DRAWERS SOLD SEPARATELY



*Shown as Model 802 with extra shelf (P901-04) and drawers (P800-1)



311 MASTER TECHNICIAN BENCH

The ultimate bench for the accomplished technician, designed to provide maximum work space for supervision and teaching. This bench contains 13 drawers, a 36" [91cm] electrical strip, air and gas valves, and a 3" [7.6cm] suction inlet with blastgate. This bench is constructed of heavy gauge steel with an oven cured, powder coated finish and includes a Resistop work surface. A 6 1/2" deep x 6" high [17cm x 15cm] vertical riser is mounted in the rear of the bench.

Shipping Wgt.: 350 lbs. [158.7Kg]

Unit Dimensions: 74" W x 24 1/2" D x 32" H to work surface
[188cm x 62cm x 81cm]



231 PLASTER BENCH

A seven foot bench built for use as a plaster bench. Bench contains one 35" [89cm] double door cabinet, one 24" [61cm] single door cabinet and one 24" [61cm] four drawer cabinet combined. Built-in 16" x 12" x 8" deep Resistop® sink with chrome plated mixing faucet, and adjacent plaster (waste) chute. Bench constructed of heavy gauge sheet steel with an oven-cured, powder-coated finish with Resistop® Countertop and backsplash.

Shipping Wgt.: 475 lbs. [215.4 kg]

Dimensions: 83 3/8" W x 24 1/2" D x 36 3/4" H to work surface
[213cm x 62cm x 109cm]

Available with 6" riser at additional cost.

247DL – In-drawer liner available for plaster and stone storage.

231HF – Optional hands-free water faucet activator.



235 CASTING/SOLDERING BENCH

A seven foot long bench designed for casting and soldering. This bench consists of one 35" [90cm] double door cabinet, one 24" [61cm] single door cabinet and one 24" [61cm] single door cabinet with tool area insulated for placement of torches and tools. This cabinet's work surface is covered with Resistop material and contains a cut-out with a 19" Diameter x 14 1/2" High casting well.

Available at additional cost with 6" [15cm] high riser in lieu of backsplash making bench 29" [73cm] in depth. Constructed of heavy gauge sheet steel with an oven-cured, powder-coated finish.

Shipping Wgt.: 460 lbs. [208.6 kg]

Dimensions: 83 3/8" W x 24 1/2" D x 36 3/4" H to work surface
[213cm x 62cm x 109cm]



235CS CASTING/SOLDERING BENCH

All the benefits of the seven foot long 235 Casting & Soldering bench in a compact, ergonomic design. The unit comes complete with a cutout and casting well, 3 drawers for storage, knock-outs for air & gas connection, a 6" riser and two duplex outlets. Available with a backsplash in place of the 6" riser; bench depth will be 23".

Shipping Weight: 340 lbs. [155 kg]

Dimensions: 48" W x 29" D x 36 3/4" H [122cm x 74cm x 109cm]

LABORATORY CABINETS & BENCHES

241 DOUBLE DOOR CABINET

A 35" [90cm] wide double door cabinet built of heavy gauge sheet steel and covered with Resistop work surface. Full size doors provide complete access to enclosed area. Cabinets and doors finished in an oven-cured, powder-coated finish. Shipped with 6" Backsplash, may be ordered with 6" Riser option at additional cost.
Shipping Wgt.: 185 lbs. [83.9 kg]
Dimensions: 35" W x 23 3/4" D x 36 3/4" H [89cm x 58cm x 92cm]



243 SINGLE DOOR CABINET

A 24" [61cm] wide single door cabinet built of heavy gauge sheet steel with Resistop top. Full sized door allows complete access to inside of cabinet. Shipped with 6" Backsplash, may be ordered with 6" Riser option at additional cost.
Shipping Wgt.: 130 lbs. [59 kg]
Dimensions: 24 1/8" W x 23 3/4" D x 36 3/4" H [61cm x 63cm x 92cm]

245 SINGLE DOOR CABINET

An 18" [46cm] wide single door cabinet constructed of heavy gauge sheet steel with Resistop work surface. Complete access to cabinet interior is afforded by full size door. Shipped with 6" Backsplash, may be ordered with 6" Riser option at additional cost. Cabinet finished in an oven-cured, powder-coated finish.
Shipping Wgt.: 115 lbs. [52.2 kg]
Dimensions: 18 1/8" W x 23 3/4" D x 36 3/4" H [46cm x 76cm x 92cm]



247 FOUR DRAWER CABINET

This four drawer cabinet is manufactured of heavy gauge sheet steel and finished in a durable, baked coating. Each drawer is equal in size. Work surface covered in Resistop material. Shipped with 6" Backsplash, may be ordered with 6" Riser option at additional cost.
Shipping Wgt.: 160 lbs. [72.6 kg]
Dimensions: 24 1/8" in W x 23 3/4" D x 36 3/4" H [61cm x 58cm x 92cm]

251 CORNER CABINET

A single door cabinet designed to be placed in a corner and abut modular benches on either side. Constructed of heavy gauge sheet steel and finished in an oven-cured, powder-coated finish. Shipped with 6" Backsplash, may be ordered with 6" Riser option at additional cost.
Shipping Wgt.: 190 lbs. [86.2 kg]
Dimensions:
Wall side - 46" [89cm], abutment side - 23 1/2" [60cm],
Door side - 18 1/8" [46cm],
Height - 36 3/4" [93cm]



247DL - In-drawer liner/separator available to hold plaster and stone.



256 PACKING BENCH

A packing bench utilized for general lab procedures. Manufactured of heavy gauge sheet steel with an oven-cured, powder-coated finish, this bench has a myriad of uses in the laboratory.

It is supplied with a Resistop work surface, a 6" vertical riser and two duplex electrical receptacles.

Shipping Wgt.: 145 lbs. [65.8 kg]

Dimensions: 42" W x 24 1/2" D x 32" H to work surface
[107cm x 62cm x 81cm]

261 BOILOUT CABINET

Boilout bench is constructed of heavy gauge sheet steel with added structural supports to insure the secure containment of your boilout unit. Bench contains two front doors with louvers to allow for proper air circulation throughout heated boilout unit. The piece is coated in a durable, baked finish. Shipped with 6" Backsplash, may be ordered with 6" Riser option at additional cost.

Shipping Wgt.: 215 lbs [97.5 Kg]

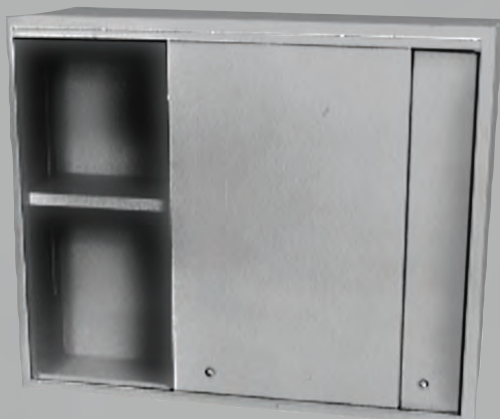
Dimensions: 35" W x 23 3/4" D x 36 3/4" H [89cm x 58cm x 92cm]

NOTE: Shown with 26102 Boilout/Curing unit—NOT INCLUDED. Specify cut out size for Boil-Out Unit.

Contact Handler prior to ordering.



**Shown with 26102
Dual Tank Curing System**



275 WALL CABINET

A double sliding door cabinet built to be mounted on the wall. Cabinet manufactured of heavy gauge sheet steel with adjustable single interior shelf. Finished in an oven-cured, powder-coated finish with glide-rite doors.

NOTE: Additional shelves available at additional cost.

Shipping Wgt.: 100 lbs [45.4 Kg]

Dimensions: 36" W x 10" D x 30" H [91cm x 25cm x 76cm]



222 DOUBLE SIDE WORK SHELF

Designed for placement on top of riser where benches are placed face to face. The shelf is constructed of heavy sheet steel and perforated steel. Built to hold case pans and finished in a baked, durable coating. Specify color when ordering.

Shipping Wgt.: 75 lbs [34 Kg]

Dimensions: 42" W x 15" D x 12" H

[107cm x 38cm x 30cm]



223 SINGLE SIDE WORK SHELF

Designed for placement on top of single position work benches. Constructed of heavy sheet steel and perforated steel, the shelf attaches to riser. Finished in a durable coating. Specify color when ordering.

Shipping Wgt.: 55 lbs. [24.9 kg]

Dimensions: 42" W x 7 1/2" D x 12" H

[107cm x 19cm x 30cm]



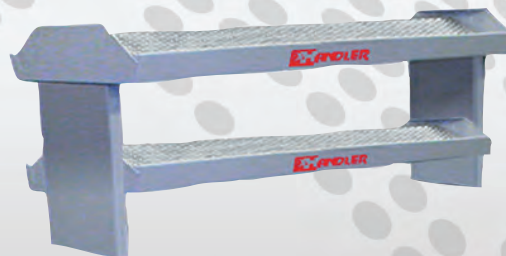
213SDT DOUBLE TIER SINGLE SIDE

Double tier work shelf for ceramist bench, constructed of heavy sheet steel and perforated steel, attaches to riser. Built to hold case pans. Finished in a durable baked coating. NOTE: Contact Handler for pricing on special size work shelves of different lengths and widths. Specify color when ordering.

Shipping Wgt.: 80 lbs. [36.3 kg]

Dimensions: 58" W x 7 1/2" S x 24 " H

[147cm x 19cm x 61cm]



222DT DOUBLE SIDE/DOUBLE TIER WORK SHELF

Designed for placement on top of riser where benches are placed face to face. The shelf is constructed of heavy sheet steel and perforated steel. Built to hold case pans and finished in a baked, durable coating. Second shelf doubles work area. Specify color when ordering.

Shipping Wgt.: 95 lbs [34 Kg]

Dimensions: 42" W x 15" D x 24" H

[107cm x 38cm x 61cm]



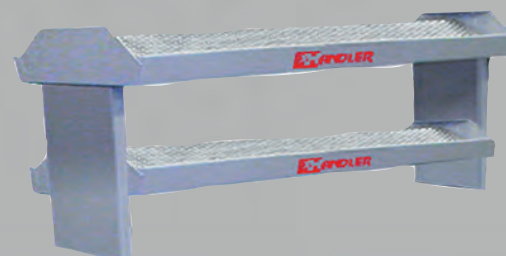
223DT DOUBLE TIER SINGLE SIDE

Designed for placement on top of single position work benches. Constructed of heavy sheet steel and perforated steel, the shelf attaches to riser. Finished in a durable coating. Second tier doubles workshelf area. Specify color when ordering.

Shipping Wgt.: 75 lbs. [34 kg]

Dimensions: 42" W x 7 1/2" D x 24" H

[107cm x 19cm x 61cm]



213DT DOUBLE TIER DOUBLE SIDE

Designed for placement on top of riser where benches are placed face to face. The shelf is constructed of heavy sheet steel and perforated steel. Built to hold case pans and finished in a baked, durable coating. Specify color when ordering.

Shipping Wgt.: 90 lbs

Dimensions: 58" W x 15" D x 24" H

[147cm x 38cm x 61cm]

INDEX

Abrasive Discs	24	Flask Ejector	17	Shield for Splash Hood	14
Accela-Rotor	3	Flask Presses	16	Silicone/Teflon Spray	21
Air Hose	26	Foot Switch	25	Solenoid Valve	24
Air Valve	26	Fume Hood	25	Spindles	18
Articulators	21	Gas Valve	26	SPL88	21
Atlas Flasks	15	Gasket Kit	24	Splash Hoods	14
Automatic Chucks	3,19	Giant Flask	15	Spring Filler	17
Bench Accessories	25-26	Handpiece & Parts	20	Stand-Up Polishing	12-13
Bench Clamps	16	High Speed Grinder	3	Suction Units	6-8
Benches	33-36, 38	High Speed Attachment	19	Teflon/Silicone Spray	21
Blastgate	23	In-Drawer Suction	23	Turret	26
Blow Guns	26	Jacobs-Type Chucks	18	Vibrators	21
Boilout Units	9	Knockout Discs	17	Wall Cabinet	38
Cabinets	37-38	KO Ejector	17	Water Solenoid	24
Cast Flange	26	Lab Benches	33-36, 38	Wheel for Trimmer	24
Casting Machine	25	Lab Bench Accessories	25-26	Workstations	28-36
Casting/Soldering Benches	36	Lab Furniture	27-39		
Casting Wells	25	Lathes	2		
Central Vacuums	8	Lathes w/ Chuck Changers	3		
Ceramist Bench	34	Master Technician Bench	35		
Chair	25	Microetcher Cabinet	6		
Chucks & Spindles	18	Microetching Pencil	6		
Chuck Changers	3,19	Model Trimmers	4-5		
Com-A-Part Flask	15	Model Trimmer Accessories	24		
Corner Cabinet	37	Model Trimmer Wheels	24		
Curing Units	9-10	Ortho Angulator	5		
De-Flasking Discs	17	Packing Bench	38		
Denture Flasks	15	Pedestal Benches	33-35		
Denture Presses	16	Plaster Bench	36		
Dexterity 2000 Workstation	35	Plaster Bins	25		
Diamond Trimmer Wheel	24	Plaster Trap	24		
Drum Cartridges	22	Pneumatic Curing Vessel	10		
Dry Trimmers	5	Polishing Motors	2		
Dust Collectors	6-8	Polishing Units	11-13		
Etcher Catcher	6	Pressure Pot	10		
Etching Pencil	6	Pro-Tech Lite Benches	33		
Fishmouth	23	Replacement Filters	22		
Filters	22	Replacement Wheels	24		
Flanges	23,26	Sandblasters	6		
Flasks	15,17	Shelves	39		
Flask Compresses	15	Shield for Model Trimmer	24		

HANDLER

YESTERDAY, TODAY AND TOMORROW



It was the early 1900's and the German emigrant owner of a small dental lab in Kearney, New Jersey was making vulcanite dentures and partials. Edward Handler knew there must be a better way to make removable dental appliances. He designed and had cast new styles of denture flasks that were easier to take apart and remove models. He designed a newer style and less expensive flask press.

Both the "Donham Flask" and "Ideal Press" were a hit in the local dental lab market, so Ed decided to open a dental manufacturing facility at his location in Kearney. Ed added vulcanizers and different flasks to his growing manufacturing facility and continued to create and innovate newer and better denture processing equipment for the local dental market, including a new dental lathe – The Red Wing Lathe.

In the mid 1930's Ed Handler decided to move his facility to Kinney Street in Newark, NJ across from one of his larger customers, the Wm Dixon Company. Then in the late 1940's after WW II, he moved his facility to Garwood, NJ in a new 5,000 square foot facility. There Ed continued to build cast flasks for dentures, crown and bridge flasks, vulcanizers, Red Wing Lathe and a newer product – a polishing unit. Towards the end of the 1950's, Ed Handler met George DeCoursey, the Vice-President and General Manager of Aderer Gold and the Cosmos Company. In 1957, Ed sold the business to George DeCoursey and retired.

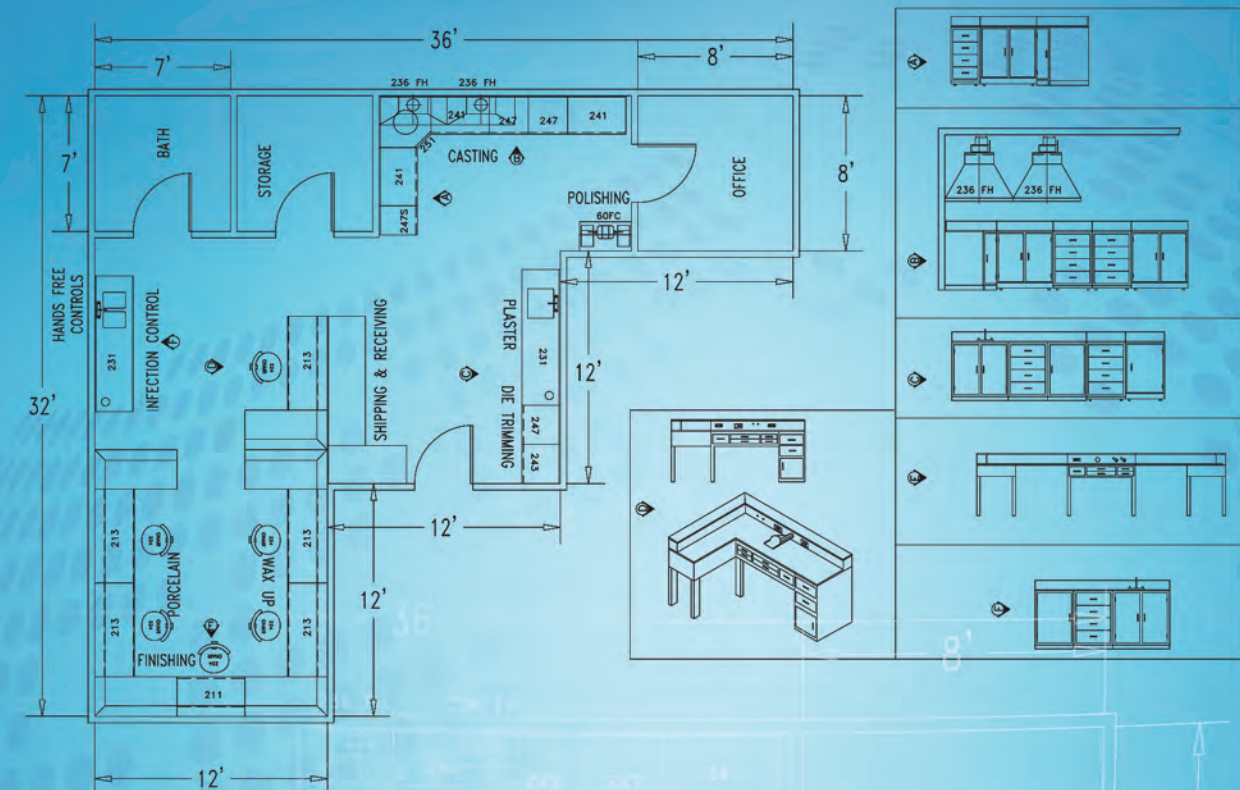
DeCoursey continued in the family tradition of building durable dental lab equipment. In 1963 George hired a young engineer, Bill Lehman, who was also George's son in law. Over the next year business tripled and Handler's business continued to grow, adding new products to their line of lathes, forged denture flasks, sturdy denture presses and compresses, plus polishing units, dust collectors and other products for various industries. In 1979 Bill Lehman purchased the company from George DeCoursey and continued creating and building new, quality products for the dental, jewelry and industrial trades. Continuing in the family tradition, Handler continued to grow and prosper.

Today, Handler Manufacturing Co., Inc. is known world wide for their quality products which are built at affordable prices. Unlike many "manufacturers" today, Handler continues to build and manufacture over 90% of their products in their factory in Westfield, NJ. With in house sheet metal and machine shop, Handler has the capability to custom build one product or larger quantities for customers. Handler products are sold exclusively through authorized dealers and distributors and Handler staff members work closely with the end user to provide a custom designed lab furniture layout or suction system for the individual laboratory.

In 2001, a new family member entered the Handler business. Rick LaDuca brought with him much experience and diverse business background from the corporate world including new ideas and computer technology. In 2004 Handler added a new ERP computer system, which has helped to improve quality, build better and more durable products, plus design new products for the dentist's lab and modern dental lab. Handler recently designed and bought out a new eight flask two stage electric curing system at a very competitive price. New Pro Tech Lite line of work station designs have been added to Handler's line of lab furniture, along with new and more efficient cartridge filter systems for our dust collectors. Handler is able to help the lab owner and dentist design a lab with an efficient work flow, while providing them with high performance products at affordable prices. Along with this, Handler products are manufactured and built in the United States, not in other countries.

Today, Handler continues to build their standard line of durable denture processing equipment e.g. flasks, press, compresses, which were Ed Handler's original product line, as well as Red Wing lathes and model trimmers, Dyna-Vac small and large dust collectors and chucks, in addition to designing newer and more efficient processing equipment for the trades served by Handler. By visiting Handler's web site at www.HandlerMfg.com, the customer may see the full line of products built by Handler in addition to the trades served.

As the dental industry continues to evolve, so will Handler. Handler has built a rich heritage of manufacturing products that customers need and servicing their customers with integrity, professionalism and courtesy. Handler is committed to maintaining this traditional value system, while continuing to focus on manufacturing good, solid American made quality products to meet the demands of the dental lab and other industries served. Innovation, creativity and customer care will always be a part of Handler's culture. **And, if you don't see it, maybe Handler can build it for you.**



Handler's benches and cabinetry can withstand the rigors of the lab environment and are manufactured of 18 gauge steel with long-lasting Resistop® work surface.

Handler's solutions are the most affordable solutions in the industry. The staff at Handler has the experience and know how for efficient lab work flow and can customize almost any solutions to meet requirements.

No project is too small or too big



Handler manufactures its products in the USA and offers turn around times that are very reasonable.

Handler offers a variety of colors and styles to meet your needs.

Handler provides the necessary accessories such as gas and air valves, boil out and curing units, casting areas, plaster work areas, polishing units, central or decentralized dust collection systems, hands free faucets and sinks, comfortable seating, shelves, lighting, plaster bins, wall mounted storage and more.

The staff at Handler understands labs and we care about our customers!

AMERICAN-MADE DURABILITY IN DENTAL LAB EQUIPMENT

FAMILY OWNED & OPERATED SINCE 1920

- All 18 gauge welded steel construction with an oven-cured powder-coated painted finish
- Spacious 6" riser or chase to run air, gas and electric lines
- Totally enclosed, powerful and quiet 62-II Dust Collector pre-wired for ease of operation
- Double tier shelf to hold cases conveniently
- Dual fluorescent bulb overhead lighting mounted on stylish and strong support with the pre-wired light switch
- Six outlet pre-wired power strip
- Removable 16" x 12" stainless steel work surface protector
- Laboratory grade solid, smooth Resistop® work surface that resists stain and scratches
- Two suction inlet options
 - Bench top 3" suction inlet with blast gate
 - In drawer suction complete with protective acrylic shield and padded comfort arm rest
- Four drawers for storing tools and equipment
- Easy set-up and assembly
- Dimensions: 42"W x 30"D x 32" H work surface



RED WING
TECH Lite

Made in the U.S.A.
Since 1920

PTL-215SP

HANDLER
RED WING INTERNATIONAL

(800) 274 2635

612 North Ave East, Westfield, NJ 07090
Tel (908) 233-7796 Fax (908) 233-7340
WWW.HANDLERMFG.COM

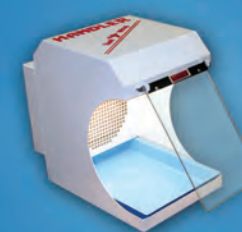
HANDLER
RED WING INTERNATIONAL



AMERICAN-MADE DURABILITY IN
DENTAL LAB EQUIPMENT

FAMILY OWNED & OPERATED SINCE 1920

Dental Equipment & Supply 2013 Catalog



(800) 274 2635

612 North Ave East, Westfield, NJ 07090
Tel (908) 233-7796 Fax (908) 233-7340
WWW.HANDLERMFG.COM